



# **Yardian Max - Multifunctional Smart Controller User Guide**

2024 Q3 Ver. 001 (ENG)

# The Yardian Max is perfect for faculty agriculture



## Facility Environmental Control Solution Features



### Local Operation

The Yardian Max come with a 4-year warranty. The system operates locally without relying on an internet connection. Data can be saved locally through the Yardian Data Hub. Remote control and monitoring are possible when an internet connection is available.



### Flexible scheduling

We offer various scheduling options, including Quick Control and Quick Program to activate stations immediately, Manual Program to activate stations based on set dates and times, and Conditional Program to create automated routines for different scenarios with corresponding sensors.



### Versatile Station Control

Maximize the Yardian Max system's versatility with the One-at-a-Time Group function. This feature lets you configure the controller to run specific stations sequentially for tasks like irrigation or operate multiple stations simultaneously for other applications.



### Flexible Master Control

Maximize control with the Master by Station feature, activating the master station only for selected stations. Ideal for irrigation, it provides control without engaging the master valve or pump relay.

## Edge computing secures your investment without internet reliance

### Wi-Fi Direct Connect

No need for internet connection, you can connect to the controller using your phone's Wi-Fi, enabling direct operation and setup.



### Control Through The Cloud

You can remotely control using your smartphone browser, connect via Wi-Fi or Ethernet, and optionally add a LTE router for internet access.



# Simultaneously used for various purposes—irrigation, equipment control, and environmental monitoring



connecting to solenoids

through relays

through local network

## Irrigation Control



## Device Control



Electrical Cabinet



Fan



Shading Net



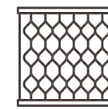
Light



Water Wall



Humidifier



Roller Blinds

## Sensor Integration



Yarden Data Hub



Light



Temperatur



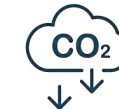
Humidity



Rainfall



Soil



Air

# Create Automated Routines for Different Scenarios



Daily 09:00~15:00

light sensor higher than 50k lux

close the shading net

Daily 09:00~18:00

light sensor lower than 8000 lux

turn on light for 30 minutes



Daily 09:00~15:00

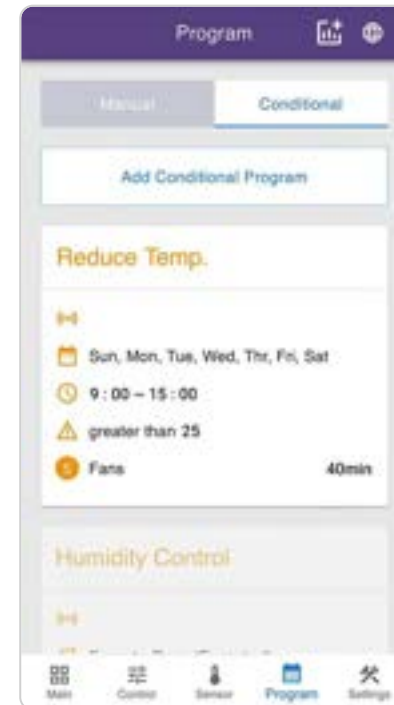
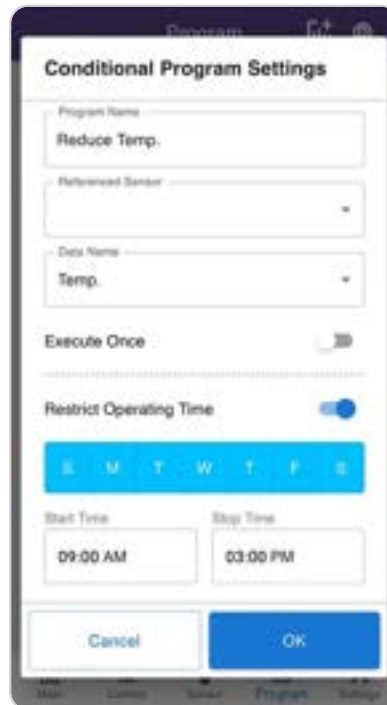
temperature higher than 25°C

Turn on the fan for 40 minutes

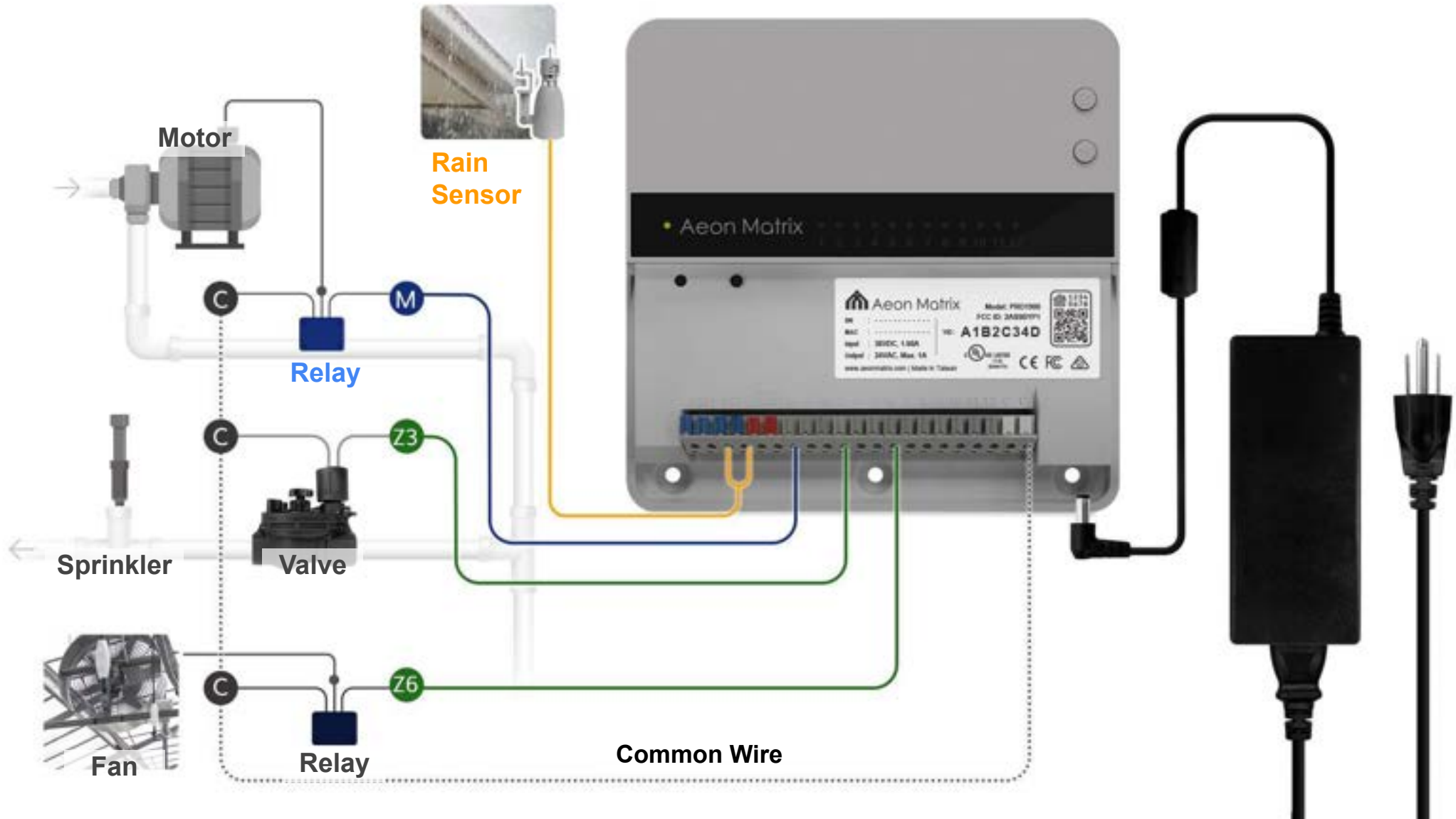
Daily 00:00~06:00

temperature lower than 20°C

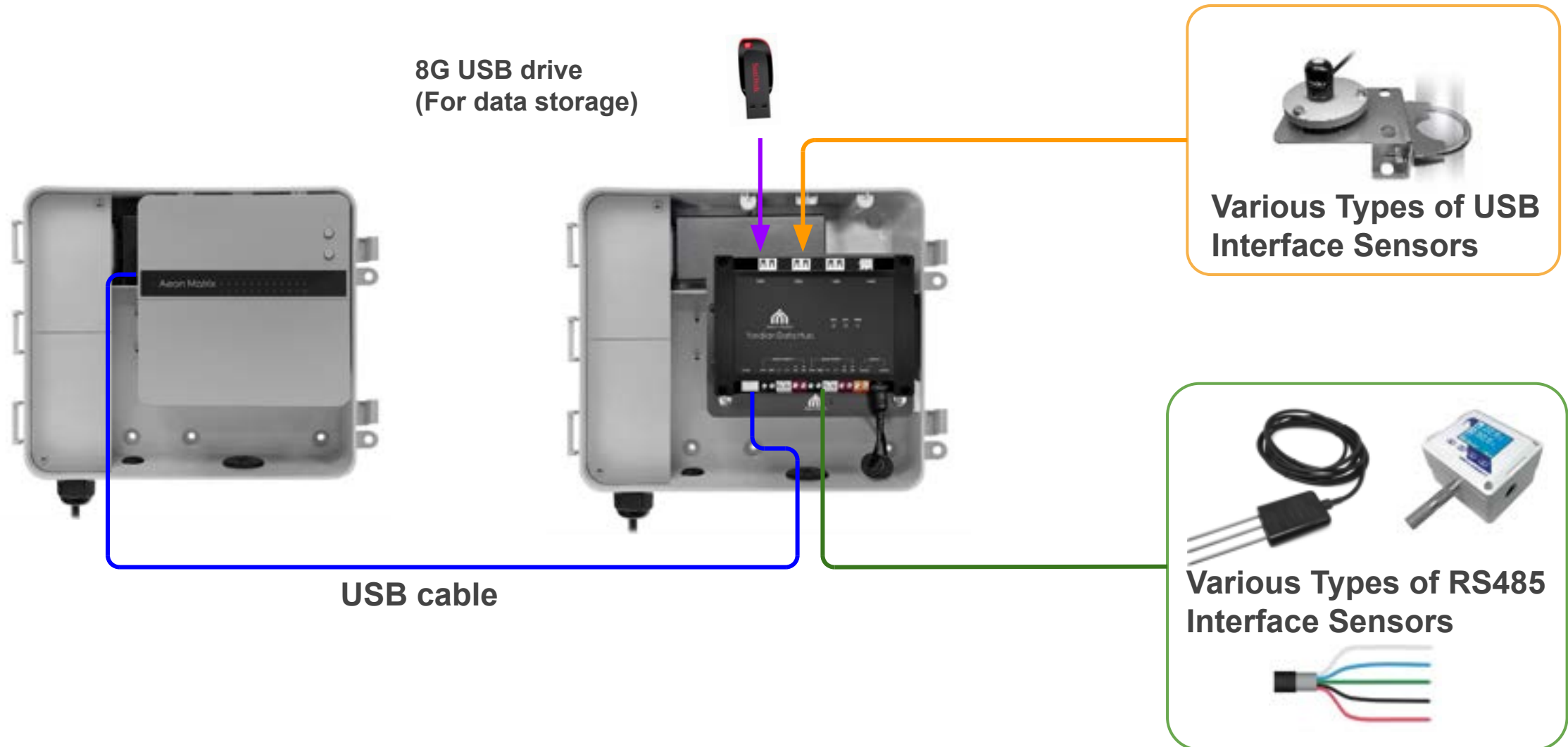
Turn on heater for 20 minutes



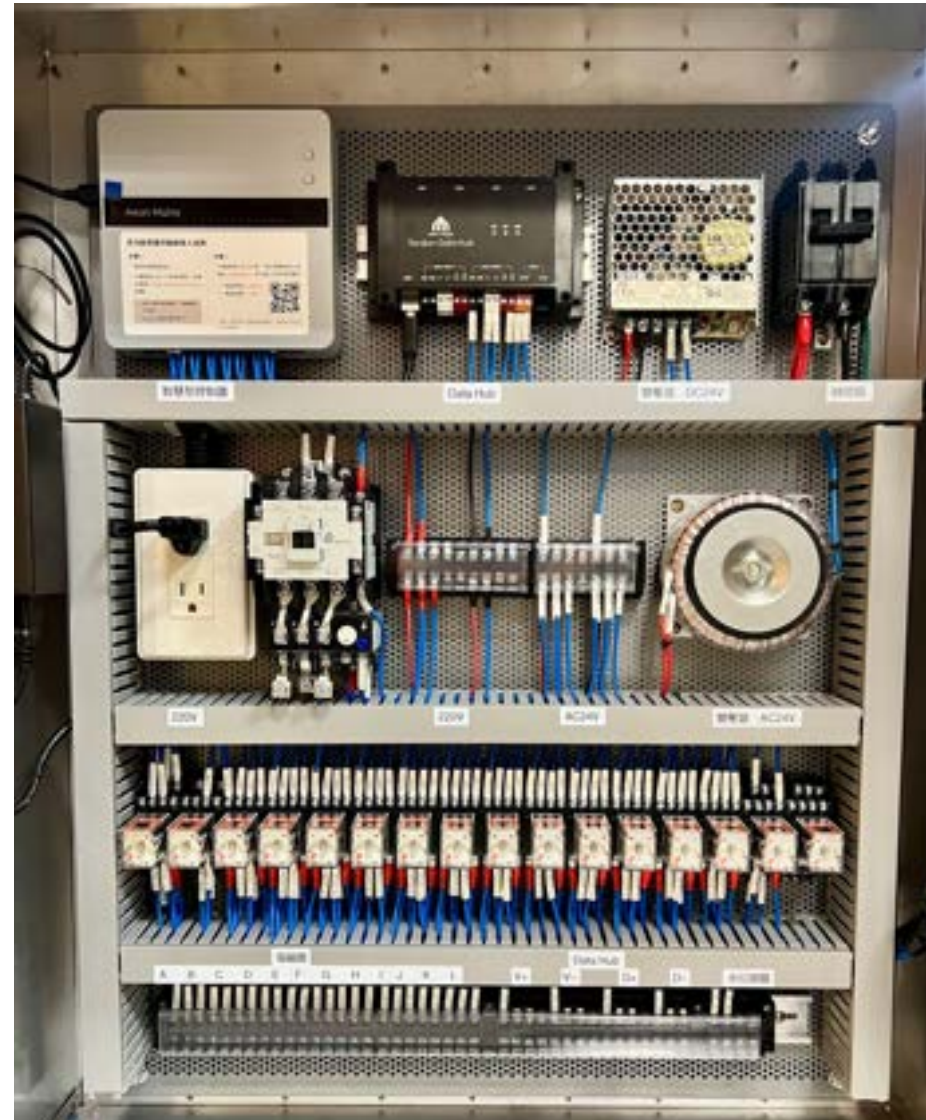
# Multifunctional Smart Controller Irrigation Application Wiring Diagram



# Multifunctional Smart Controller Sensor Data Collection Kit Diagram



# Multifunctional Smart Controller Equipment Control Panel Diagram



# Yardian Max Product specification



Interfaces	<ul style="list-style-type: none"> <li>• 8-zone/12-zone with surge and overcurrent/short protection</li> <li>• On-device buttons for “zone status detection” and “instant watering control”</li> <li>• RJ45 port and USB port</li> <li>• Dedicated master valve/pump</li> <li>• Dedicated 24VAC output port Two sensor ports</li> <li>• Wire range: 14AWG – 22AWG</li> </ul>
Dimensions and Weight	<ul style="list-style-type: none"> <li>• 6” L x 6” W x 1.38” H (15cm x 15cm x 3.5cm)</li> <li>• 1lbs (0.45Kg)</li> </ul>
Controller Power	<ul style="list-style-type: none"> <li>• Yardian must be connected to the power adapter included</li> <li>• Input: 36VDC, 1.66A</li> <li>• Output: 24VAC, Max.1A</li> </ul>
External Power Adapter	<ul style="list-style-type: none"> <li>• Input: 100 – 240VAC, 50 – 60Hz, Level VI efficiency</li> <li>• Output: 36VDC, 1.66A</li> </ul>

APP	<ul style="list-style-type: none"> <li>• iOS 10.0+ and Android™ 5.0 Lollipop®+</li> <li>• Web control available</li> </ul>
Rain Sensor Support	<ul style="list-style-type: none"> <li>• Programmable to Normally Closed (NC) or Normally Open (NO)</li> </ul>
Flow Sensor Support	<ul style="list-style-type: none"> <li>• Pulse output sensor</li> </ul>
Operating Temperature	<ul style="list-style-type: none"> <li>• -22°F to 140°F (-30°C to 60°C)</li> </ul>
Warranty	<ul style="list-style-type: none"> <li>• 2-year limited warranty</li> </ul>
Design	<ul style="list-style-type: none"> <li>• Indoor use (with optional Weatherproof Outdoor Enclosure)</li> </ul>
Internet Connection	<ul style="list-style-type: none"> <li>• Built-in Wi-Fi 2.4G, 802.11 b/g/n</li> </ul>
Future Proof	<ul style="list-style-type: none"> <li>• Future integrations through Over-The-Air software updates</li> </ul>
Certification	<ul style="list-style-type: none"> <li>• UL, CE, FCC and RCM certified</li> </ul>



# Yardian Data Hub specification



Interfaces	<ul style="list-style-type: none"> <li>• 3x USB 2.0 Type-A ports</li> <li>• 2x RS485 ports, each has             <ul style="list-style-type: none"> <li>○ 2x GND</li> <li>○ D- (A) D+</li> <li>○ (B) 12VDC</li> <li>○ 24VDC</li> </ul> </li> <li>• 1x USB 2.0 Type-C port (USBC) for connecting Yardian accessories</li> <li>• 1x USB 2.0 Type-B port (USBM) for connecting the Yardian controller</li> <li>• 24VDC power input ports             <ul style="list-style-type: none"> <li>○ Terminal block</li> <li>○ DC jack</li> </ul> </li> </ul>
Dimensions and Weight	<ul style="list-style-type: none"> <li>• 5.7" L x 3.7" W x 1.57" H (14.5cm x 9.4cm x 4cm)</li> <li>• 0.44lbs (0.2Kg)</li> </ul>
Data Hub Power	<ul style="list-style-type: none"> <li>• Input: 24VDC/2A</li> <li>• Output: 24VDC/1A, 12VDC/1A</li> <li>• USB 5V/1A</li> </ul>
Operating Temperature	<ul style="list-style-type: none"> <li>• -22°F to 140°F (-30°C to 60°C)</li> </ul>
Warranty	<ul style="list-style-type: none"> <li>• 2-year limited warranty</li> </ul>
Design	<ul style="list-style-type: none"> <li>• Can be installed using screws or DIN rail TS-35/7.5mm</li> <li>• Indoor use with optional Weatherproof Outdoor Enclosure</li> <li>• Optional 24VDC power supply available to fit the outdoor enclosure</li> </ul>

# Index

---



## **Instant Control Button**

[How to Use the "Instant Control Button"](#)

## **Connect to your controller**

[Wi-Fi Direct Connection - Direct Connect Mode](#)

[Internet Connection via WiFi - WiFi Router Mode](#)

[Internet Connection via Ethernet cable](#)

## **How to login**

[Use "Direct Connect Mode" on your phone to log in via the browser](#)

[Activate the cloud service by signing in with the 'Yardian' app](#)

## **Permission**

[User Permission](#)

## **Station**

[Station and advance settings](#)

## **Program**

[How to set up the "Manual Program"](#)

[How to set up the "Conditional Program"](#)

- [General](#)
- [Accumulated Solar Radiation](#)

[How to Use the "Quick Control" and "Quick Program"](#)

## **Other**

[Download sensor data](#)

[Rain sensor installation](#)

[Firmware update](#)



# How to Use the "Instant Control Button"

---

- Automatic detection of solenoid valve
- Instant watering control



# Automatic Detection of Solenoid Valve

Verify and Check the Connection Status of the Solenoid Valve

**Press/hold Select and Run/Stop at the same time**



**Green LEDs: Solenoid valves attached**  
**Red LEDs: Faulty solenoid valves detected**



# Instant watering control - Activate and set the desired watering time for the solenoid valve



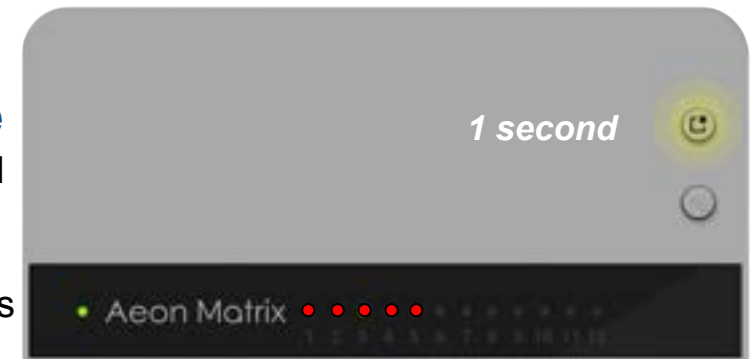
## 1. Select a zone

Press Select on the top to specify a zone in Zone Selection Mode (green LEDs)



## 2. Set the duration time

Hold Select for over 1 second to switch to Time Selection Mode (red LEDs), and press Select to specify duration in minutes



★ 1 red light = 1 min, 2 red lights = 2 mins... up to 12 mins for one zone

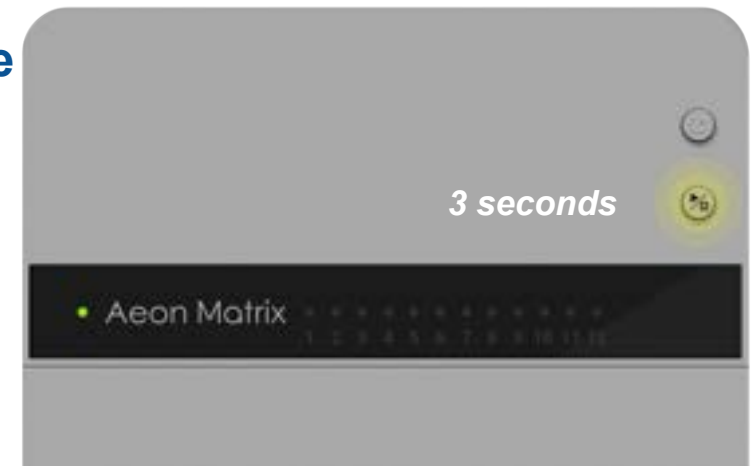
## 3. Run the zone

Press Run/Stop to run the zone



## 4. Stop the zone

To stop watering at any time, press/hold Run/Stop for over 3 seconds





# Connect to your controller

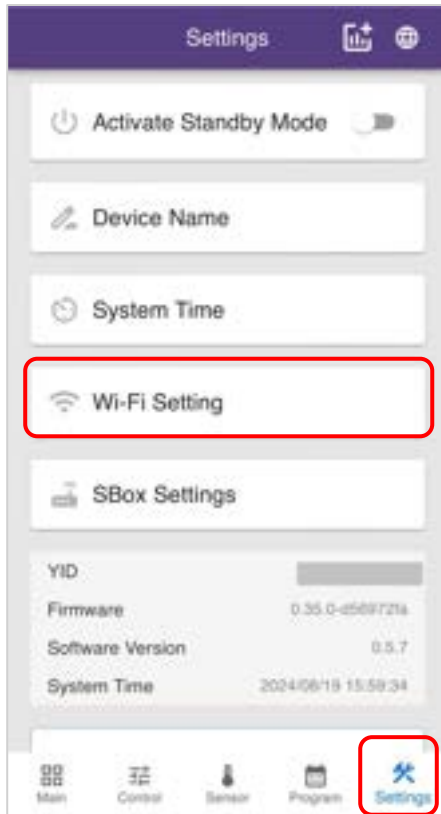
---

1. Wi-Fi Direct Connection - Direct Connect Mode (Default)
2. Internet Connection via WiFi - WiFi Router Mode
3. Internet Connection via Ethernet cable

# Remote access is available only for controllers with activated cloud services. Please contact Aeon Matrix to activate it.

# After the controller is connected to the internet with Aeon Matrix cloud service, remote operation, and OTA updates will be functional.

# Wi-Fi Direct Connection - Direct Connect Mode



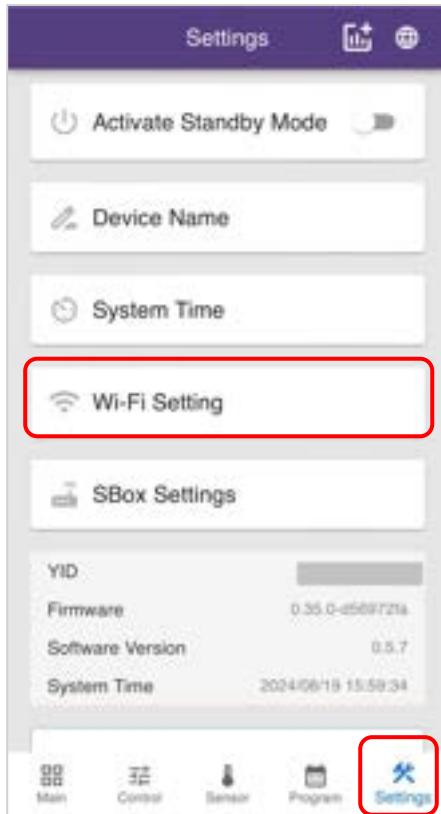
1. Tap Setting → **Wi-Fi setting**



2. Choice → **Direct Connect mode**

- The default Wi-Fi setting is Direct Connect Mode, allowing direct connection between a smartphone and the controller.
- In Direct Connect Mode, you can only access the controller through a browser. Refer: ["Use "Direct Connect Mode" on your phone to log in via the browse"](#)
- When there is no internet at the site, use "Direct Connect Mode" to connect your smartphone directly to the controller for configuration.
- Note: Stay close to the controller when using "Direct Connect Mode" to ensure a stable connection.

# Internet Connection via WiFi - WiFi Router Mode



1. Tap Setting → **Wi-Fi setting**



2. Choice → **WiFi Router mode**

**SSID: Wireless Network Name**

**Password: Wireless Network Password**

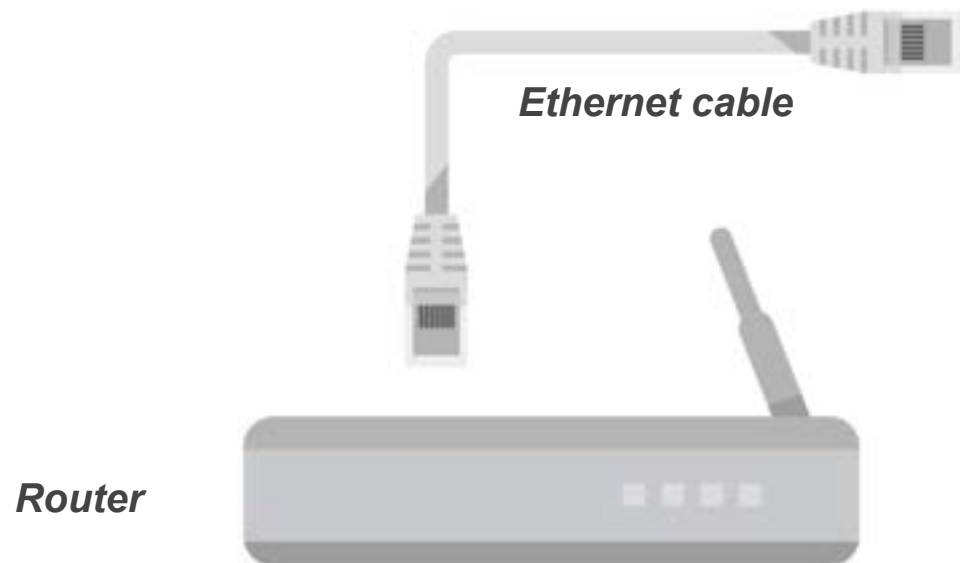
- Connect the controller to your Wi-Fi router with internet access (**2.4GHz** supported)
- **To access the control interface, you must pair the controller with the Yardian app.** Refer: "[Activate the cloud service by signing in with the 'Yardian' app](#)"
- Yardian APP Download : <https://www.yardian.com/app/>
- After successfully connecting to the internet using 'WiFi Router Mode,' the controller's indicator light will remain steadily lit in **Green**
- Note: If you want to switch from 'WiFi Router Mode' back to 'Direct Connect Mode,' you can set it in the Yardian app. Alternatively, you can press and hold the Wi-Fi button on the control panel for 3 seconds to return to 'Direct Connect Mode'





# Internet Connection via Ethernet cable

Connect the multifunctional smart controller to an internet-enabled router using an Ethernet cable. Once connected successfully, the indicator light will turn solid **blue**



Note: When you connect to the internet using an Ethernet cable without setting up WiFi router mode, you can access the control panel in Direct connect mode or use the Yadian app



# How to login

---

1. Use "Direct Connect Mode" on your phone to log in via the browser
2. Activate the cloud service by logging in with the "Yardian" app



# Use "Direct Connect Mode" on your phone to log in via the browse

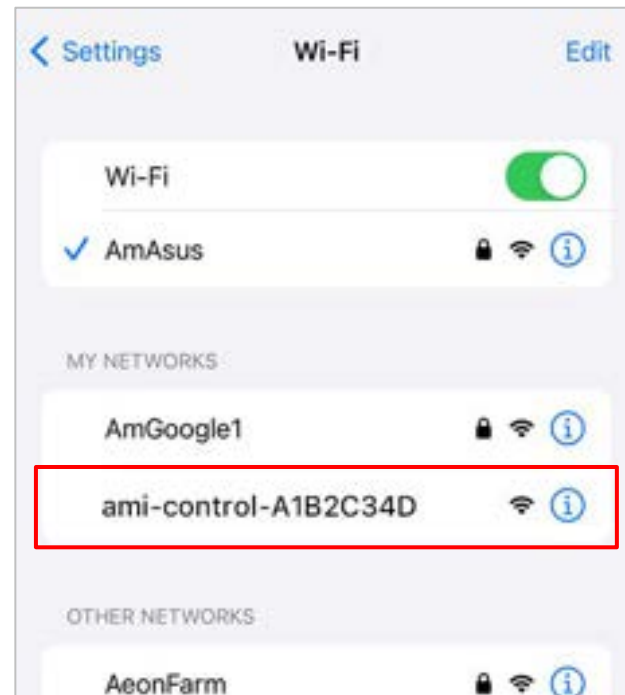
Just two simple steps to access the control panel



# Step One

Turn on your mobile phone's (Wi-Fi) wireless network, locate the controller device with the designated 'ID' on-site.

Connect to the device as illustrated, using "ami-control-xxxxxxx".





# Step Two

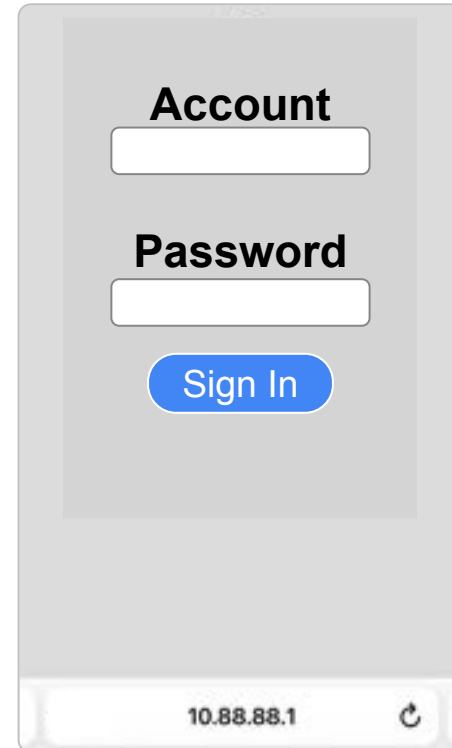
Scan the QR code with your mobile phone or enter 10.88.88.1 in the browser address bar to access the control management screen

Admin:

- Account: **admin**
- Password: **1234**

Guest:

- Account: **guest**
- Password: **1234**



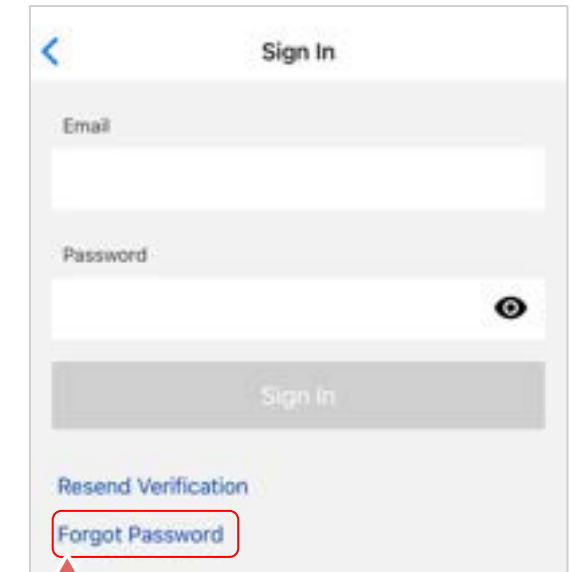
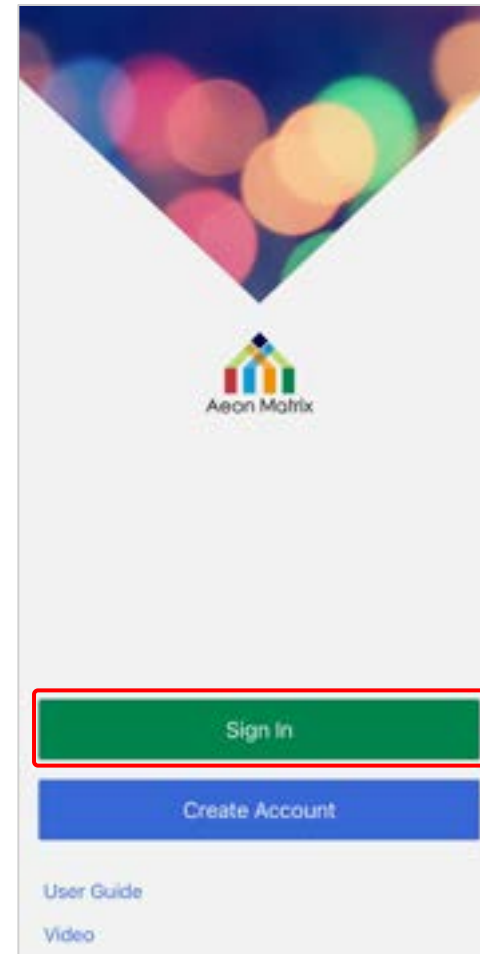


# Activate the cloud service by signing in with the "Yardian" app

Just three simple steps to access the control panel

# Step One - Sign In

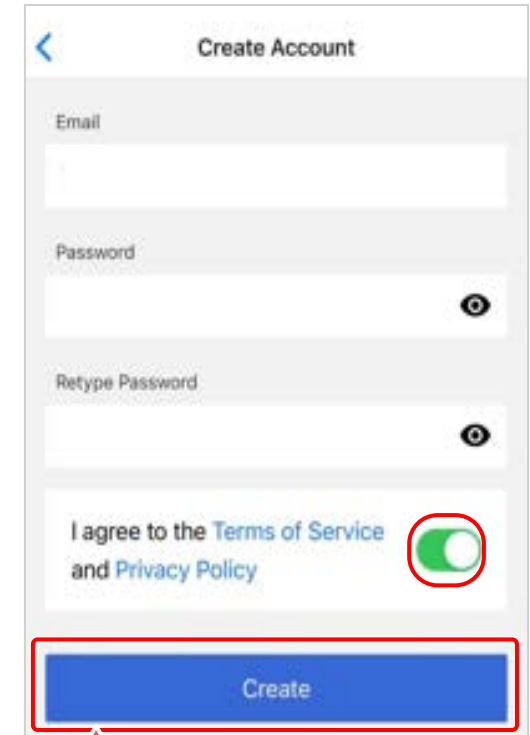
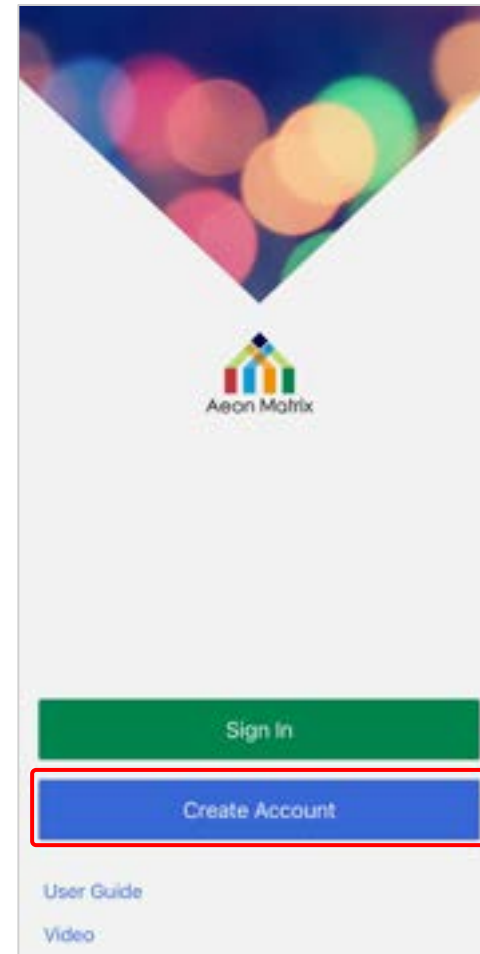
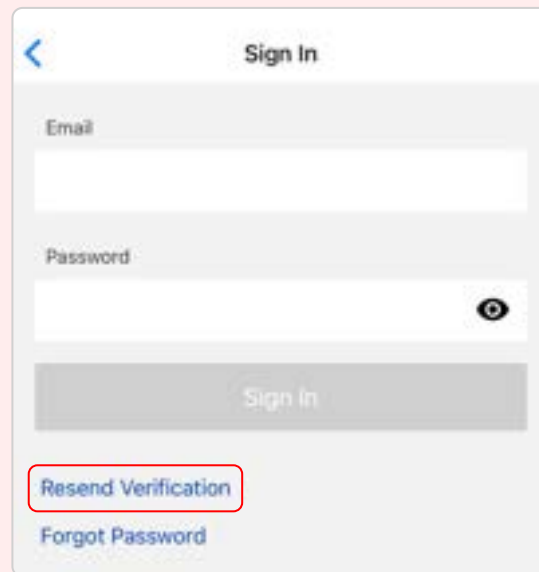
- Yardian APP download link: <https://www.yardian.com/app/>
- After entering the Yardian APP, please select "Sign In" and enter your email and password.
- After entering your email and password, please select "Sign In."
- If you forget your password, please select "Forgot Password." After entering your email, go to your email inbox to reset your password.



# Create Account

- If you haven't created an account, please select "Create Account."
- Enter your email and password, select "I Agree," then click "Create Account."
- After registration, please check your email for a confirmation message and click the confirmation link in the email to complete your registration.


- Note: If you don't receive the confirmation email within three minutes, please check your spam or junk mail folder.
- If you can't find it in your spam folder, go to "Sign In" and select "Resend Verification Email" or contact Aeon Matrix.

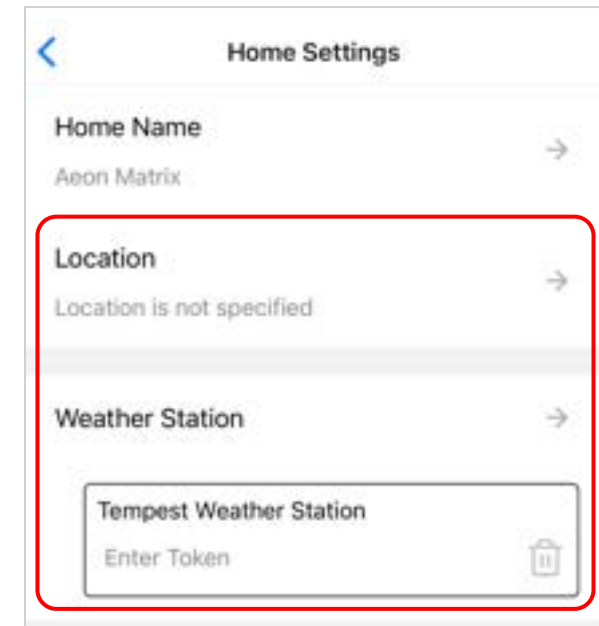
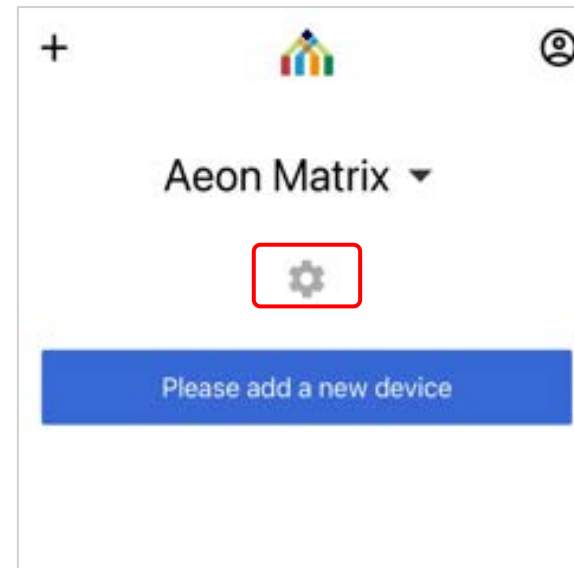
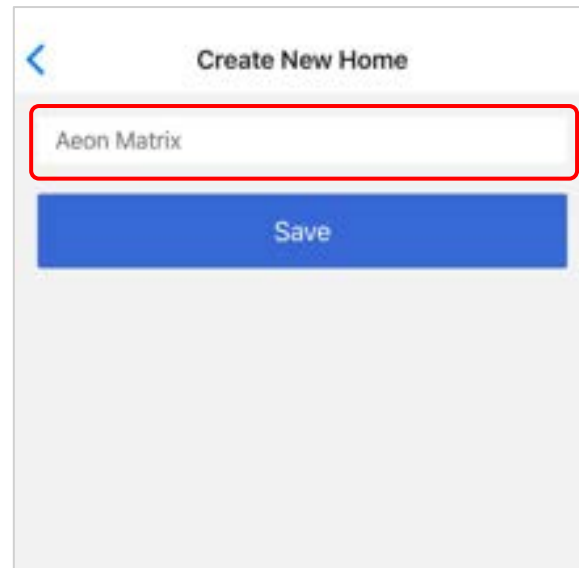
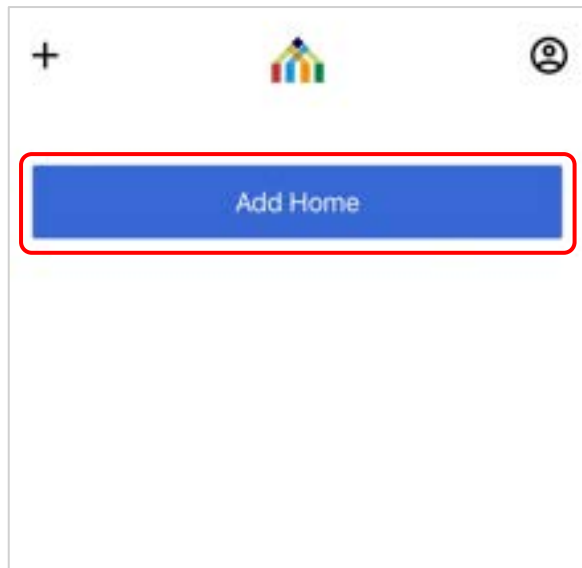






# Step Two - Settings

- After entering the Yardian APP home page, please first select "Create New Home."
- Once set up, please select  to access your home settings and start editing "Location" and "Weather Station."
- For additional details about "Home," please refer to the "Home" information.



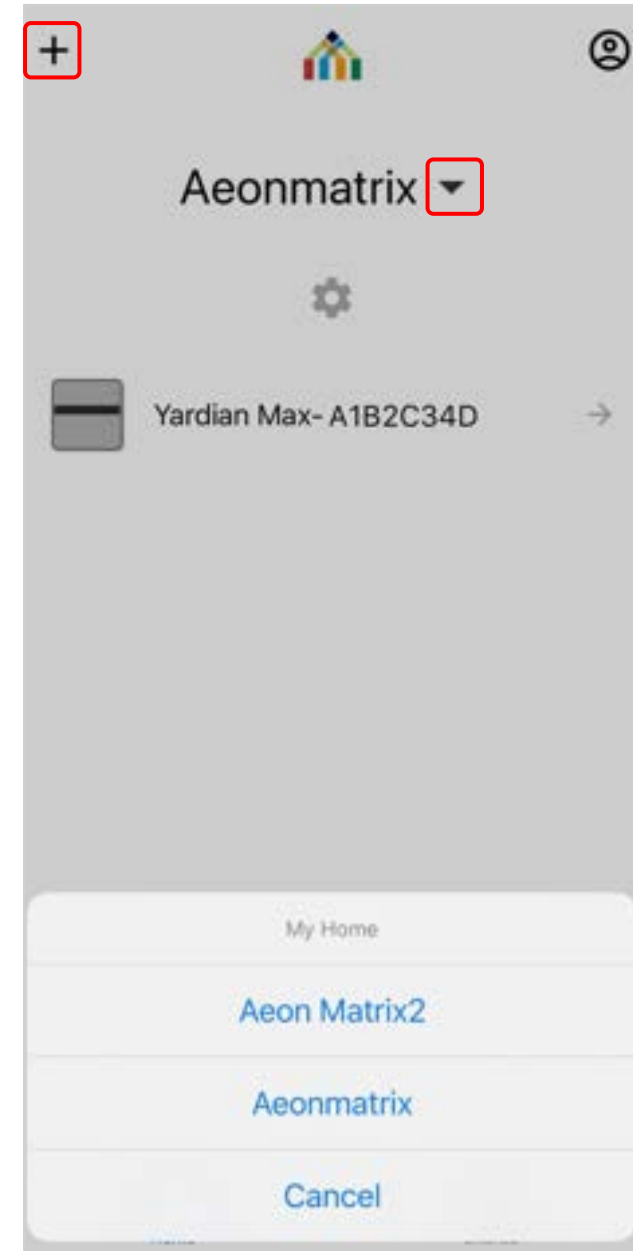
# "Home" Additional Information

You can decide how many new homes to add based on the number of controllers you need.

!!Controllers in the same location would usually be placed in the same home.

- You can tap the "+" in the top left corner of the screen to create your second or third new home
- Tap the ▼ to enter your other "homes"

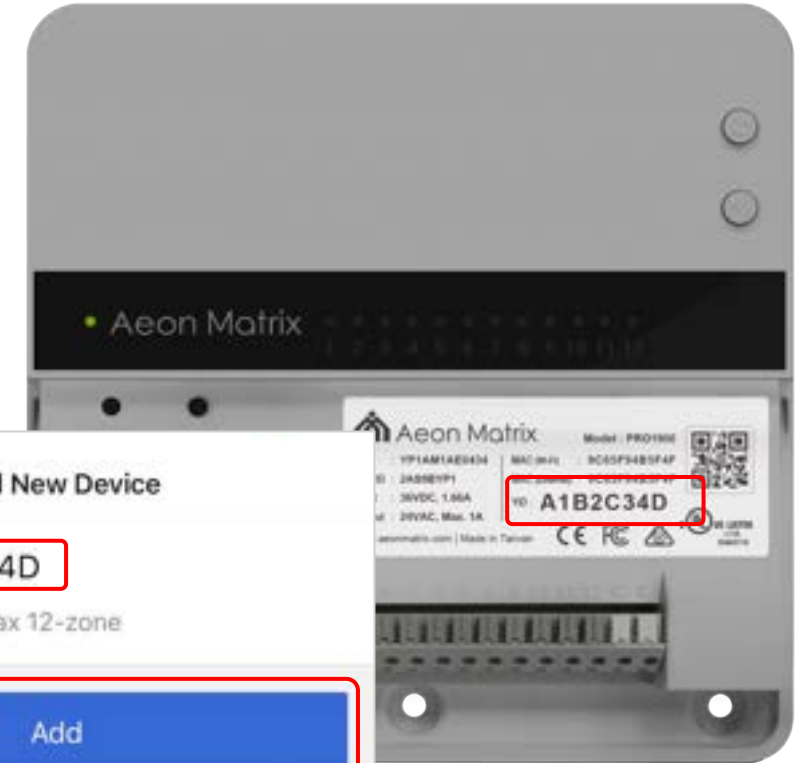
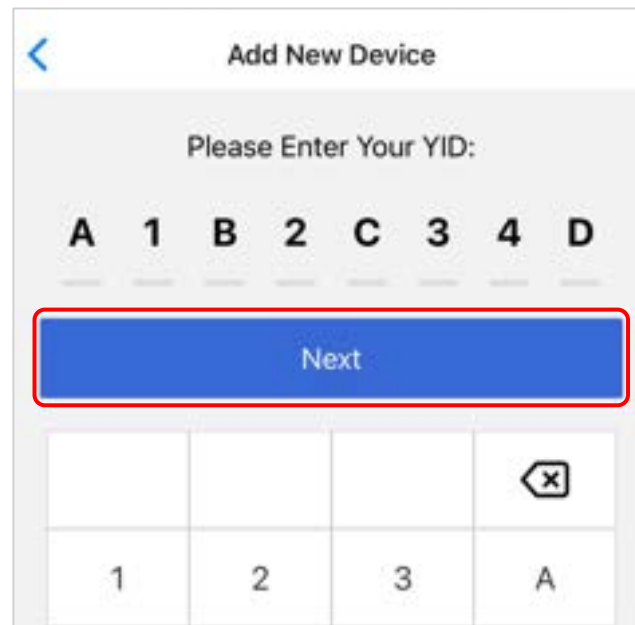
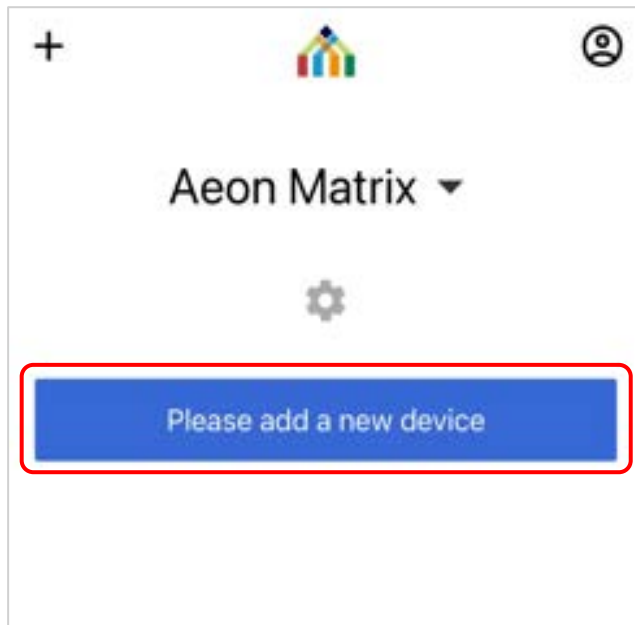
- ❖ You can have up to 5 homes in one account
- ❖ A single home can pair with up to 10 controllers





# Step Three - Add Device

- Tap "Please Add a New Device" on the homepage and enter the YID on the controller.
- After entering the YID, please tap "Next" to confirm the device you added. If everything is correct, please tap "Add".



# Access The Control Management Screen



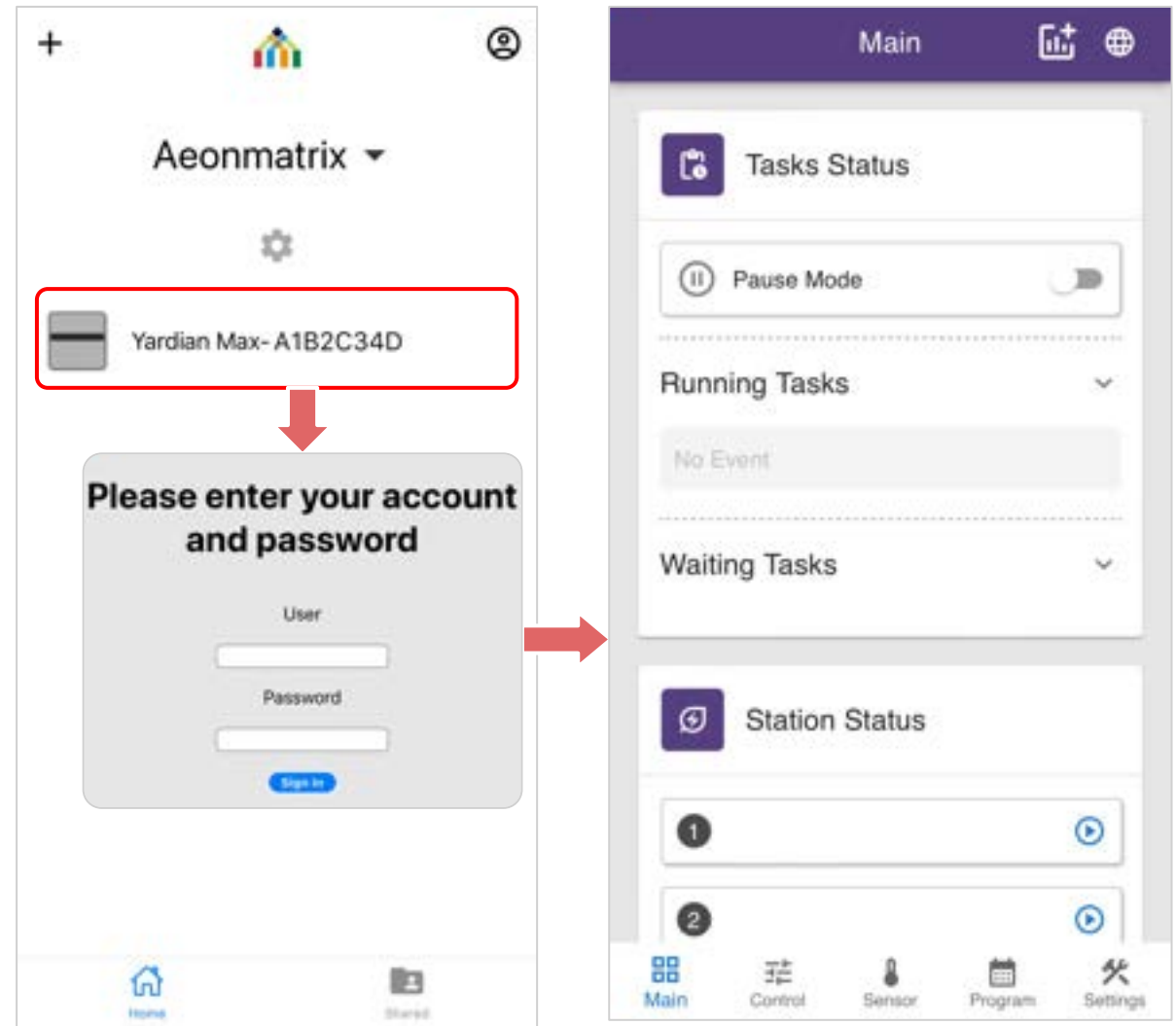
Tap on the controller on the home screen, enter your account and password, and you'll access the control management screen.

## Admin:

- ★ Account: **admin**
- ★ Password: **1234**

## Guest:

- ★ Account: **guest**
- ★ Password: **1234**





# User Permission



# 【User Permission】



## admin

The permission to configure and use all functions:

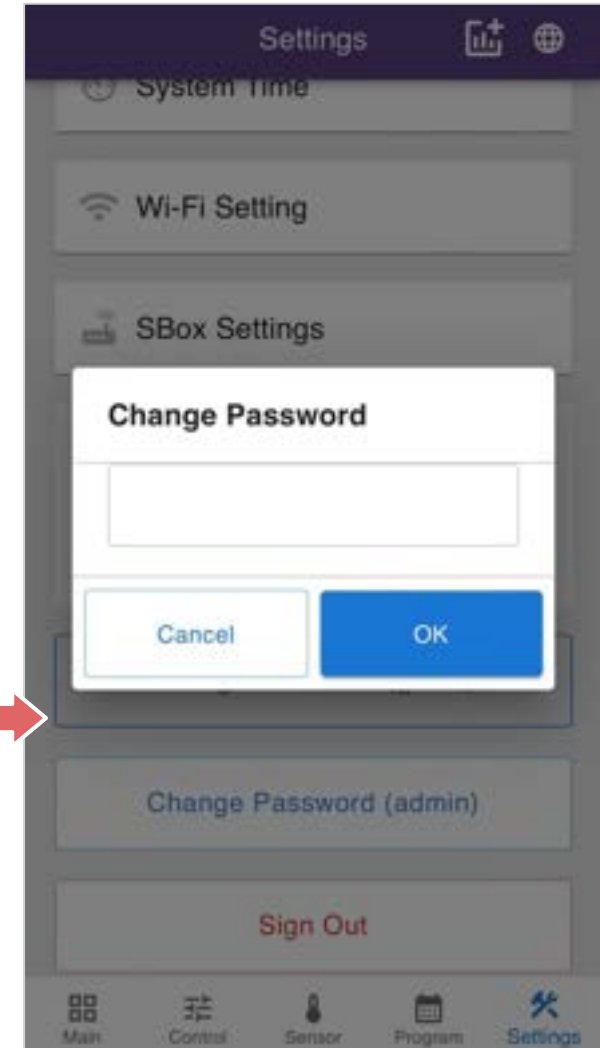
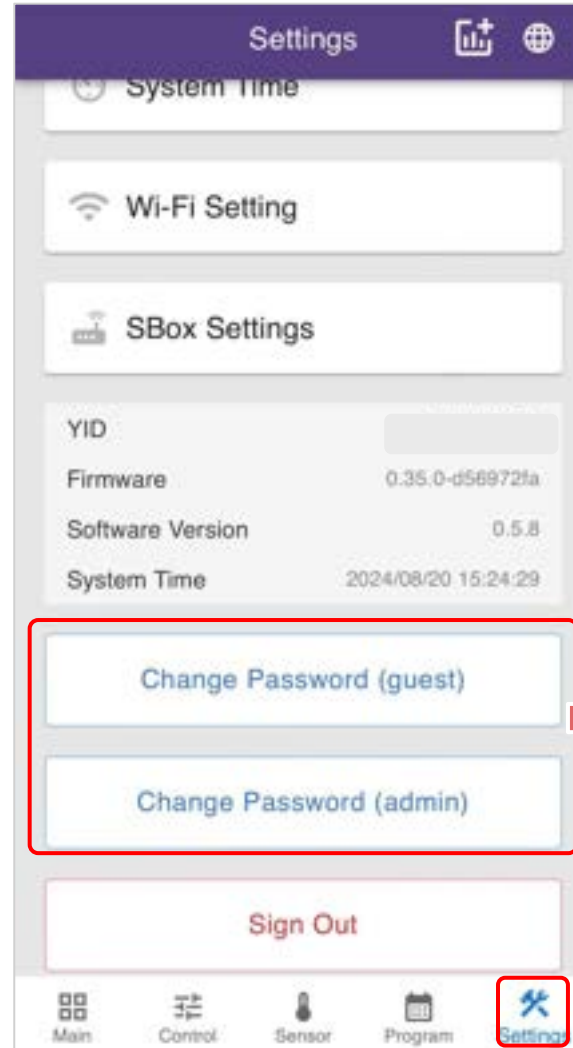
- ★ Quick Control
- ★ Quick Program
- ★ Manual Program
- ★ Conditional Program
- ★ Change Password
- ★ Edit Zone Name

## guest

The permission to use functions:

- ★ Quick Control
- ★ Quick Program
- ★ Edit Zone Name

## Change Password





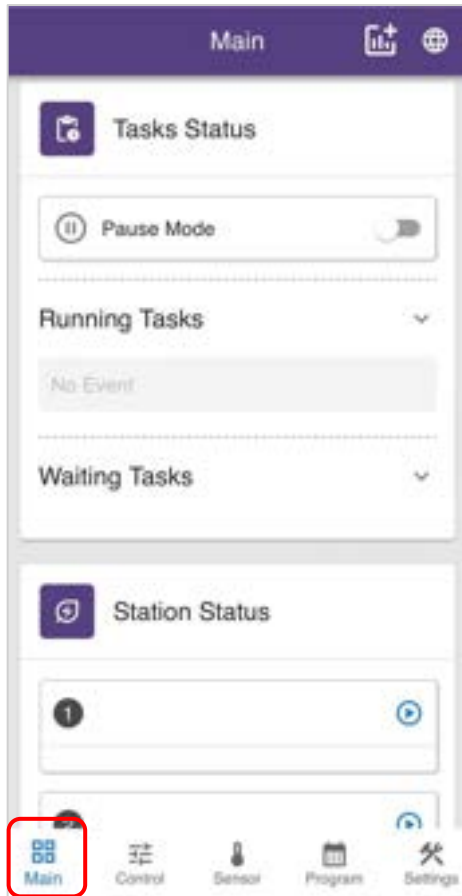
# Station and advance settings

---

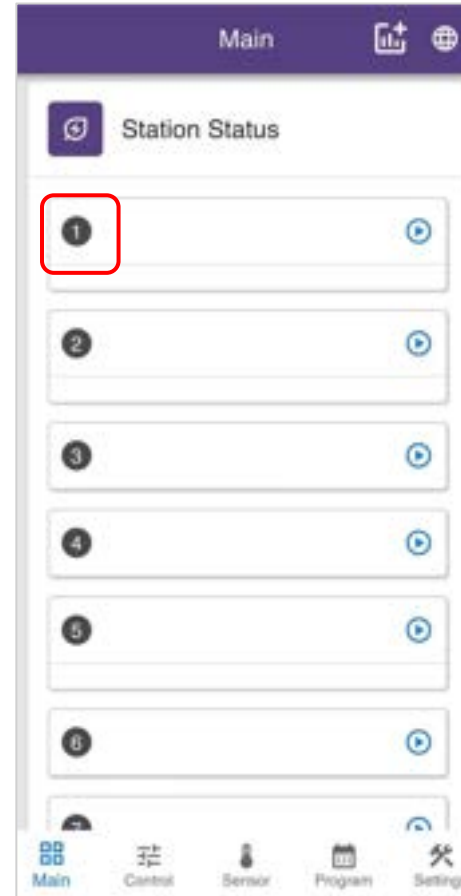
1. Edit Station Name
2. Station advance settings



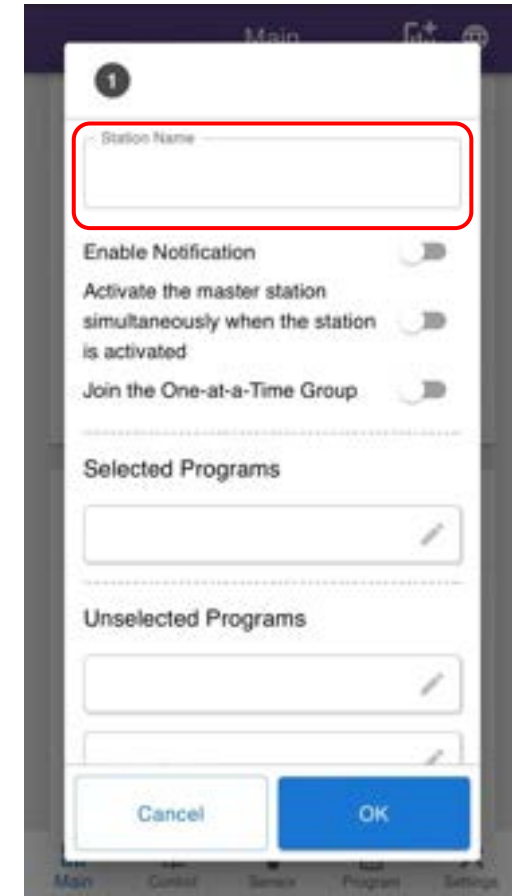
# 1.【Edit Station Name】



1. Main → Station Status



2. Tap the Station Number to access the station settings panel



3. Edit station name here



## 2. [Station advance settings]



**Enable Notifications:** Instant notifications for station activation and deactivation are enabled.

**Activate the master station simultaneously when the station is active:** When enabled, this station will simultaneously activate the pump start relay connected to the "M" terminal. If using a constant pressure pump or not connecting to the "M" terminal, this feature can be disregarded.

**Join the Exclusive Single Activation Group:** Primarily used for irrigation applications, this feature prevents simultaneous activation of multiple stations due to site water pressure limitations. When enabled, it rotates the activation sequence for multi-station irrigation.

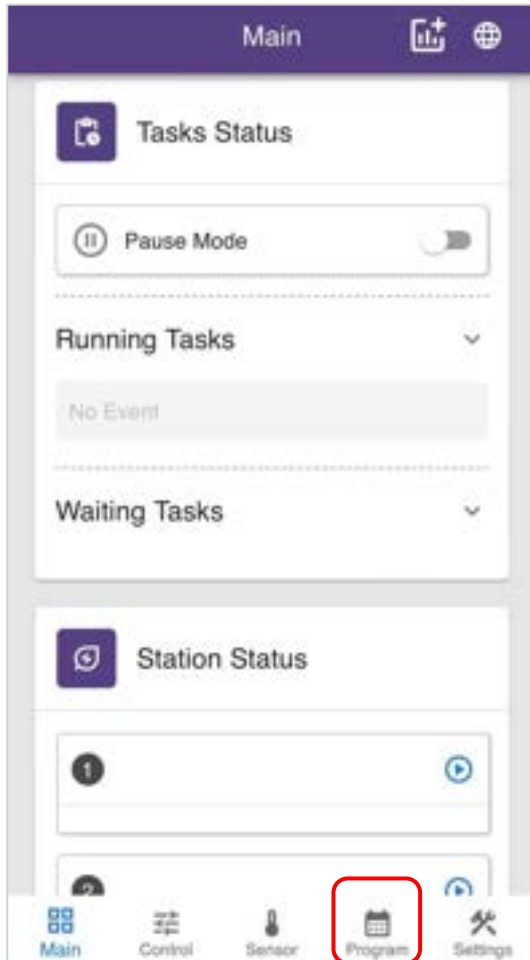


# How to set up the "Manual Program"

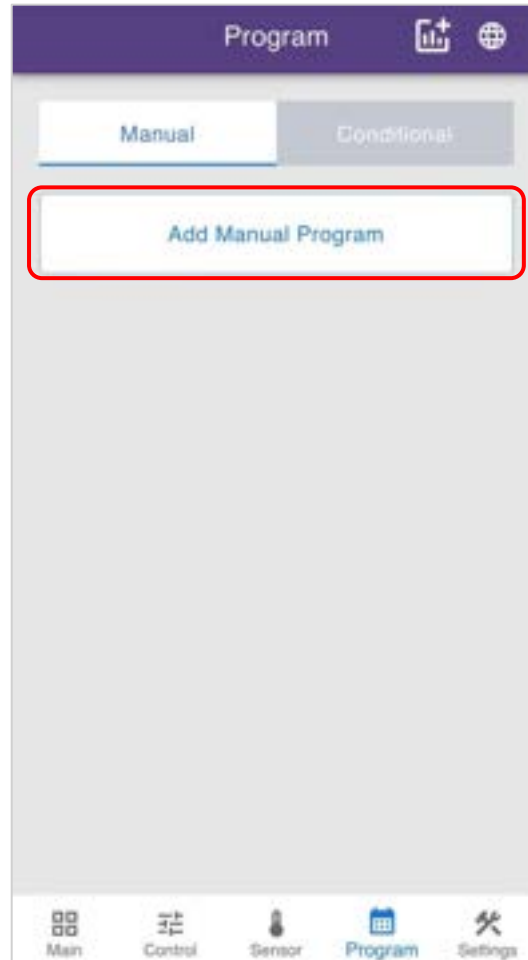
---

1. Add Manual Program
2. Set a program name, date, and time
3. Add station and duration

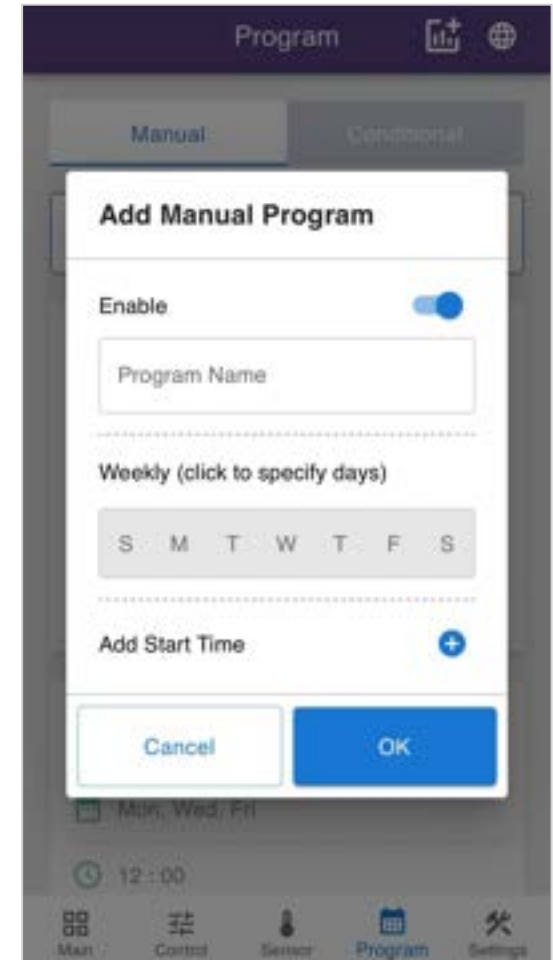
# 1. Add Manual Program



1. Tap "Program"

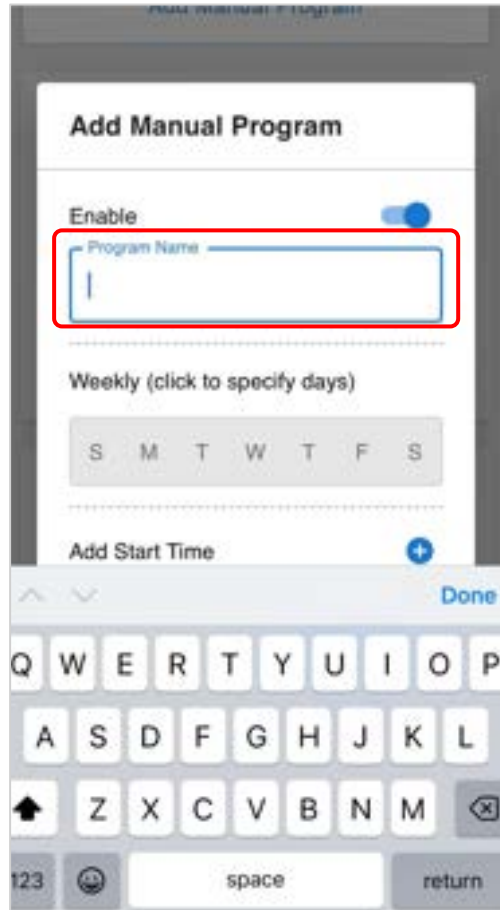


2. Tap "Add Manual Program"

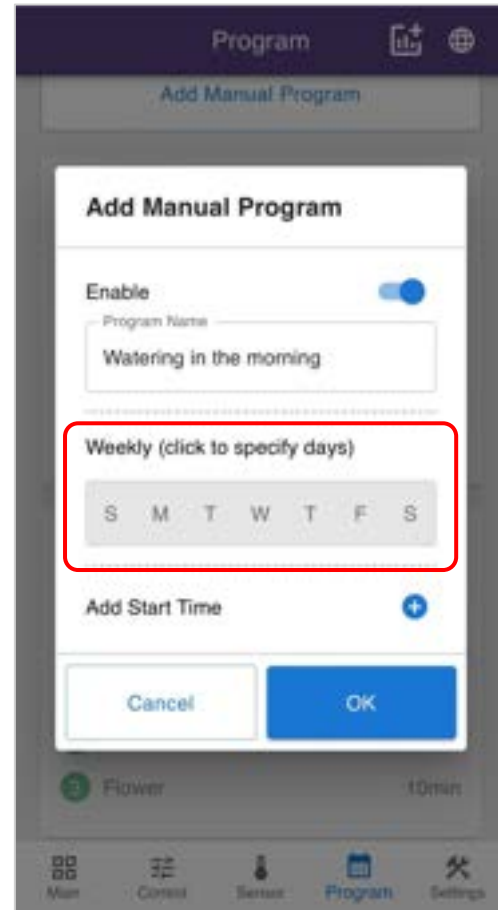


3. Enter setting manual

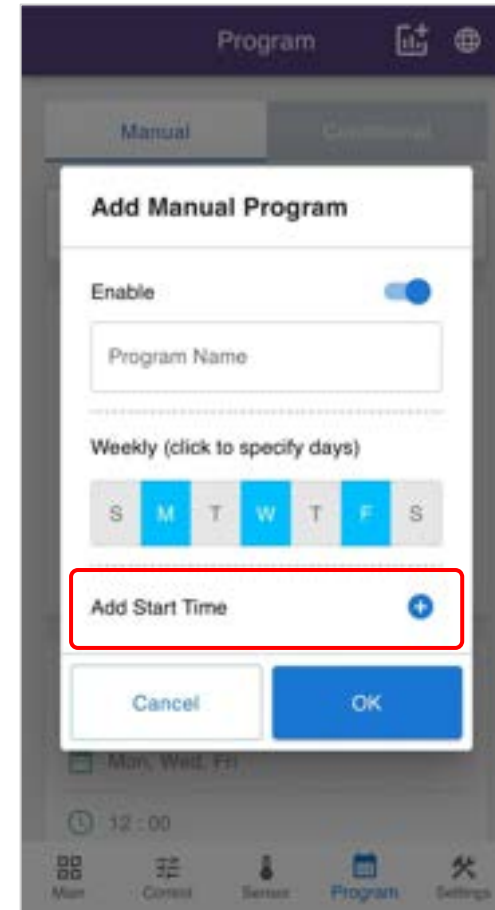
## 2. Set a program name, date, and time




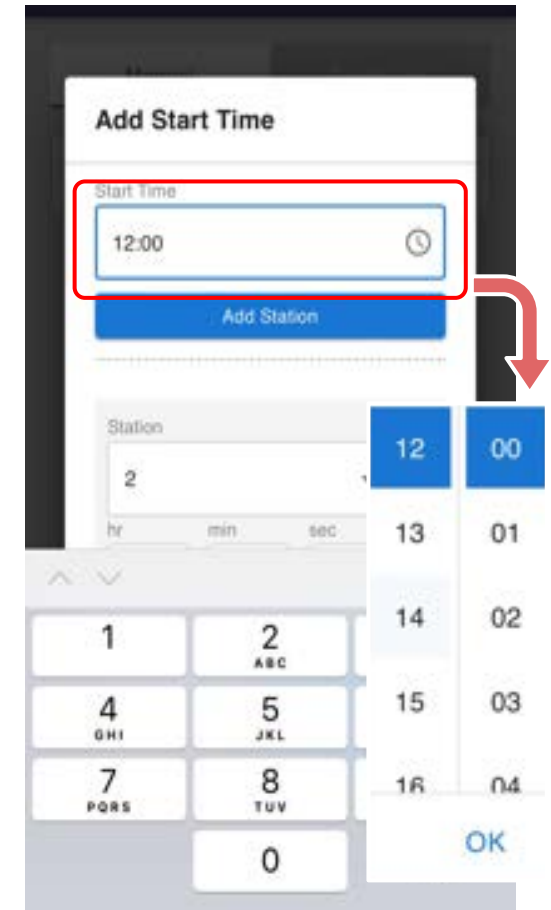
1. Enter " Program Name"



2. Click to specify days

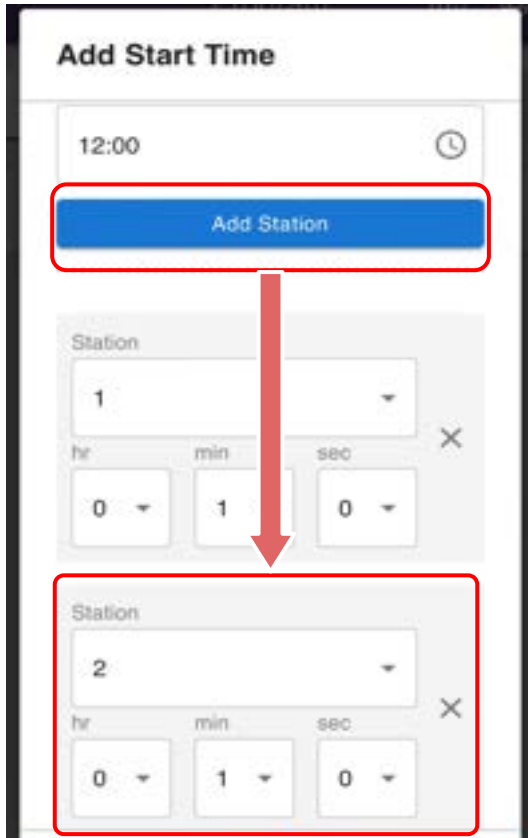


3. "Add Start Time"   
Multiple start times can be set.

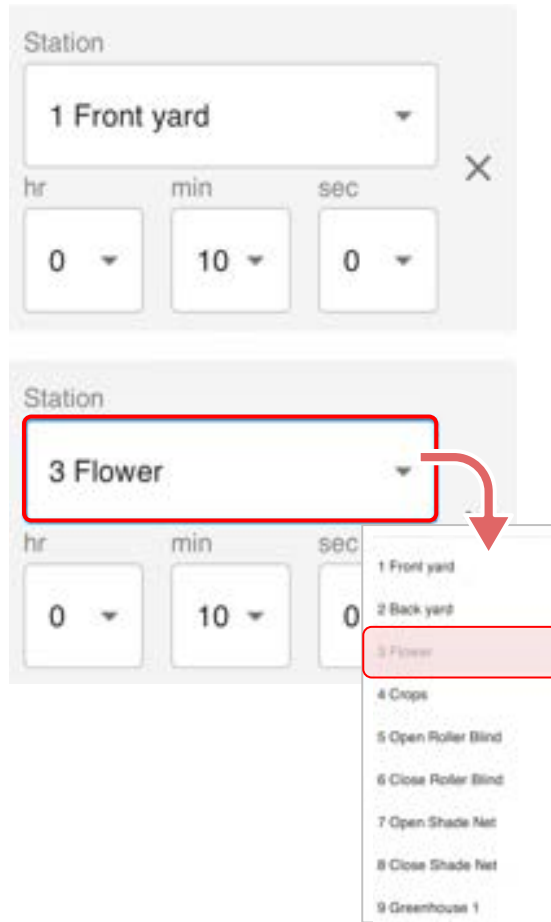


4. Tap "Start Time" to set the activation time, then tap "OK" when done

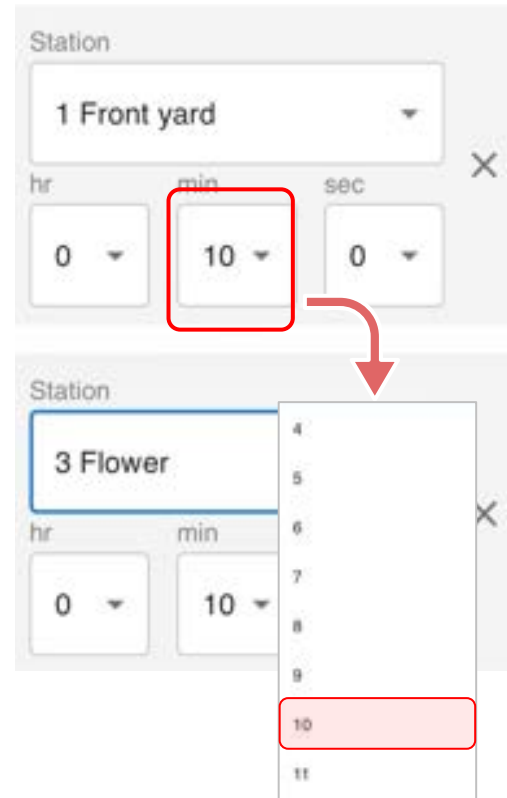
# 3. Add station and duration



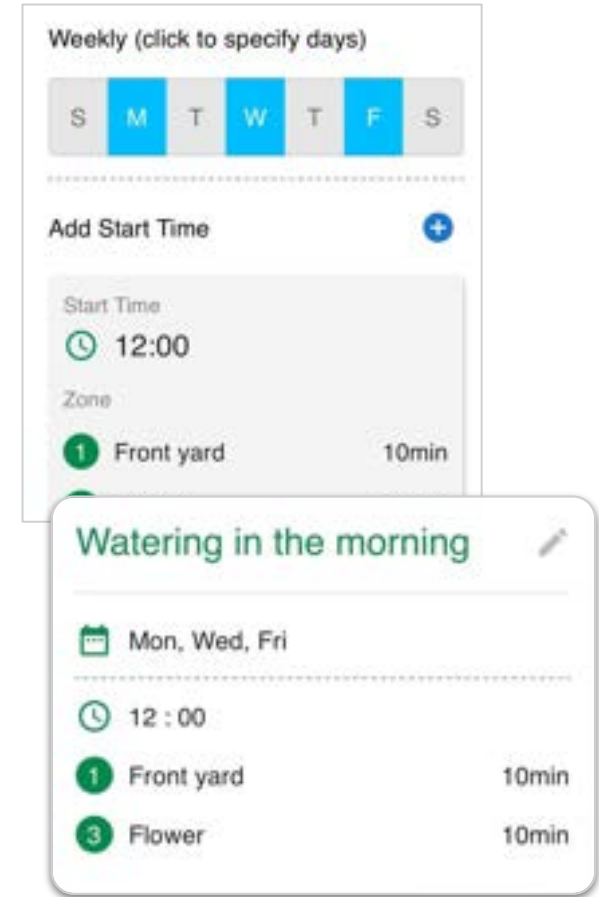
1. Tap "Add Station" to increase the number of active stations in this program.



2. Tap "Station" to select which one from the list you want to activate.



3. Set the duration for each station.



※Each program allows for one start time, but you can set different durations for each station.



# How to set up the "Conditional Program"

---

1. 【Conditional Program】General (Regular RS-485 interface sensor)
2. 【Conditional Program】Accumulated Solar Radiation ( Apogee Solar Sensor)

# 1【Conditional Program】General (Regular RS-485 interface sensor)



**Add Conditional Program**

Enable

Program Name

Referenced Sensor  
Apogee Solar Sensor (USB) ▼

General
Accumulated Solar Radiation

Execute Once

Set Cooldown Time

Restrict Operating Time

Threshold  
greater t... ▼ Value

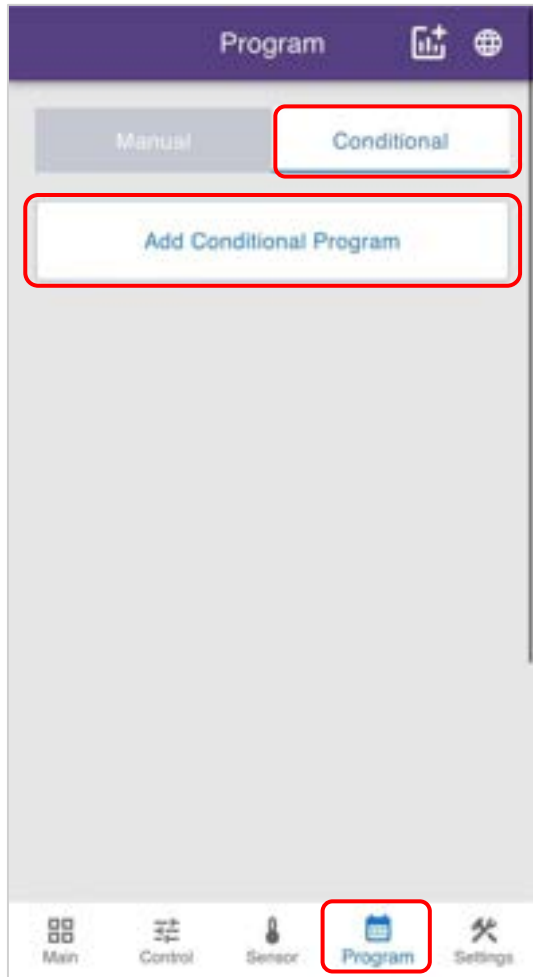
Add Station

Specify Execute-Once Programs To Reset

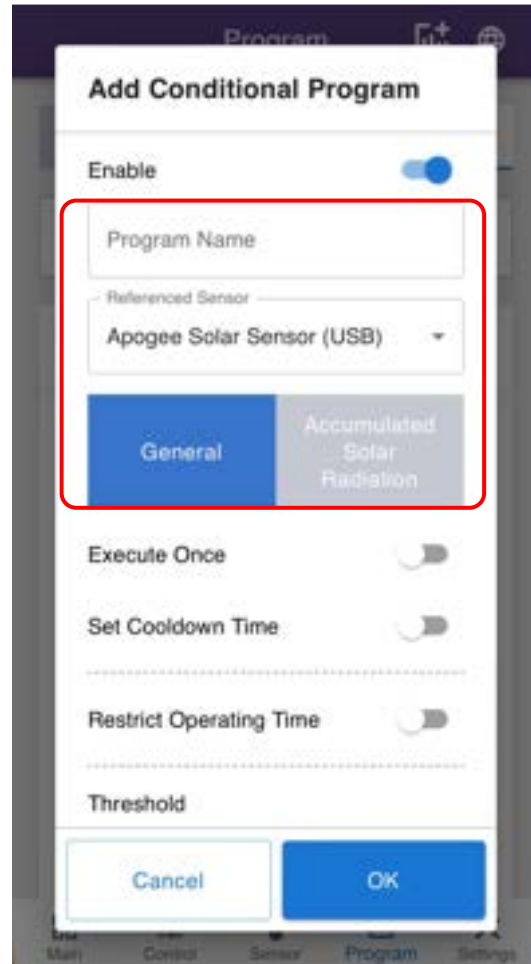
## Conditional Program/General:

<b>Program Name</b>	Edit Program name
<b>Referenced Sensor</b>	Select the program data source (options are the sensors configured on the "Sensor" page)
<b>General</b>	Control stations based on the "threshold" value.
<b>Execute Once</b>	When the threshold condition is met, the schedule will run only once. To run it again, you need to set a 'specific execute-once program' to reset. The program will execute again when the reset condition is fulfilled. This is typically used for applications like winches, shade nets, and similar equipment)
<b>Set Cooldown time</b>	Duration of sensor detection pause after the threshold condition is triggered
<b>Restrict Operating time</b>	Set the days of the week and time slots for daily operation.
<b>Threshold</b>	Set sensor threshold to "greater than/less than" and specify the value
<b>Add Station</b>	Add stations to activate when the threshold value is reached
<b>Specify Execute-Once Programs to Reset</b>	When the reset condition is met, the execute-once program will activate again

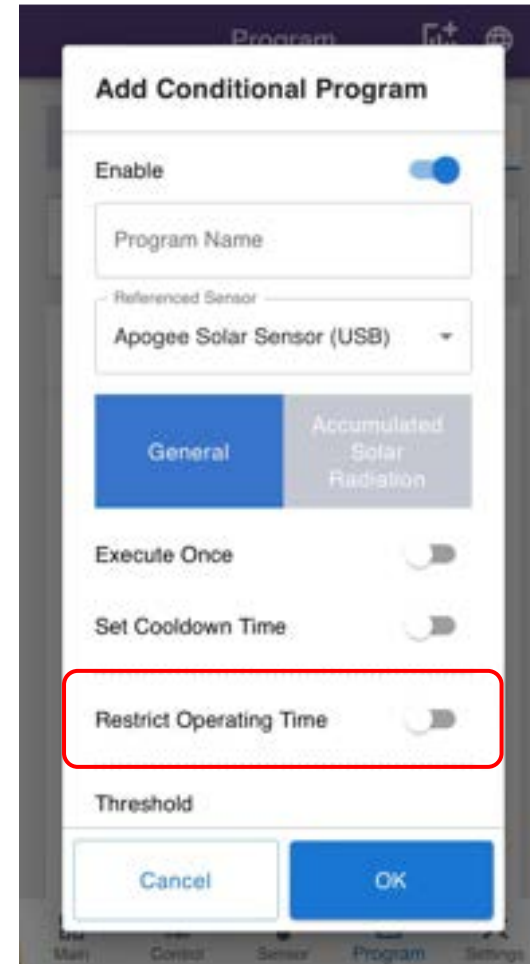
# a. Conditional Program - General (Regular RS-485 interface sensor)



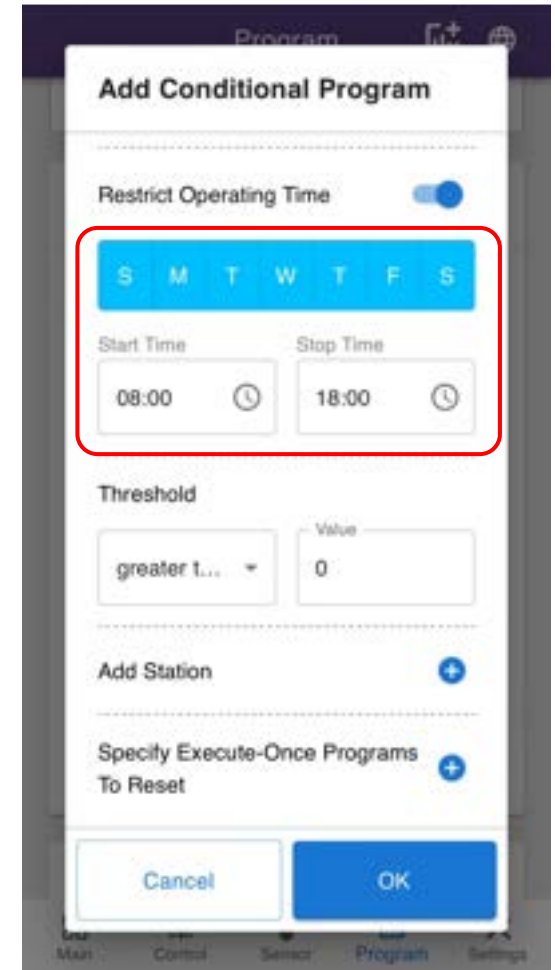
1. Add conditional Program. Tap Program -> Conditional -> Add Conditional Program



2. Enter Program Name -> Select Referenced Sensor -> Choose General



3. Enable Restrict Operating Time



4. Set the days of the week and time slots for daily operation



## b. Conditional Program - General (Regular RS-485 interface sensor)



**Add Conditional Program**

Restrict Operating Time

S M T W T F S

Start Time: 08:00 Stop Time: 18:00

**Threshold**

greater t... Value: 0

Add Station +

Specify Execute-Once Programs To Reset +

Cancel OK

5. Set sensor threshold to "greater than/less than" and specify the value

**Add Conditional Program**

Restrict Operating Time

S M T W T F S

Start Time: 08:00 Stop Time: 18:00

**Threshold**

greater t... Value: 0

Add Station +

Specify Execute-Once Programs To Reset +

Cancel OK

6. Tap **+** Add Station Add stations to activate when the threshold value is reached

**Add Conditional Program**

Add Station +

Station: 1 Front yard

Turn On X

hr: 0 min: 1 sec: 0

Station: 2 Back yard

Turn On X

Cancel OK

7. Select the stations to turn on or off, and adjust the duration

**Add Conditional Program**

Add Station +

Station: 1 Front yard

Turn On X

hr: 0 min: 1 sec: 0

Station: 2 Back yard

Turn On X

Cancel OK

8. Tap OK to complete the set up

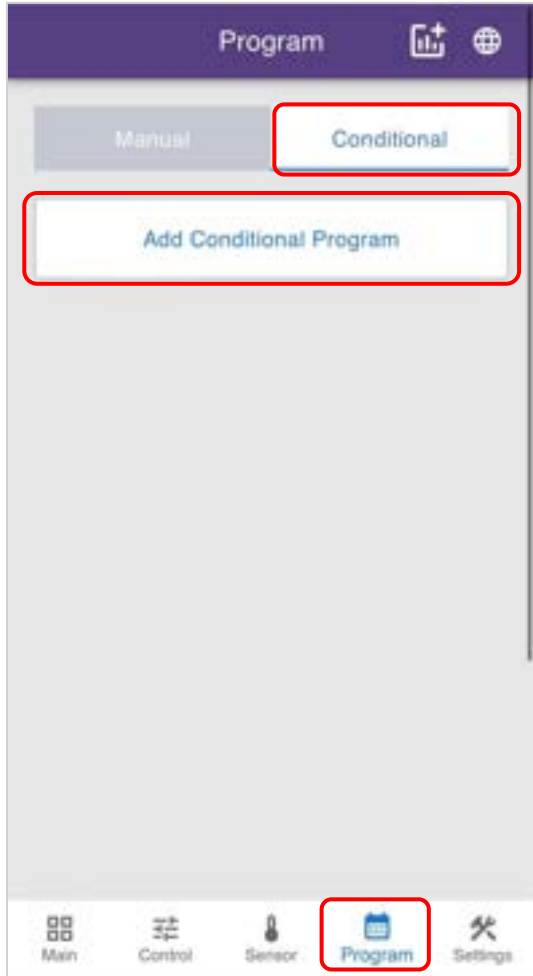
## 2【Conditional Program】Accumulated Solar Radiation ( Apogee Solar Sensor)



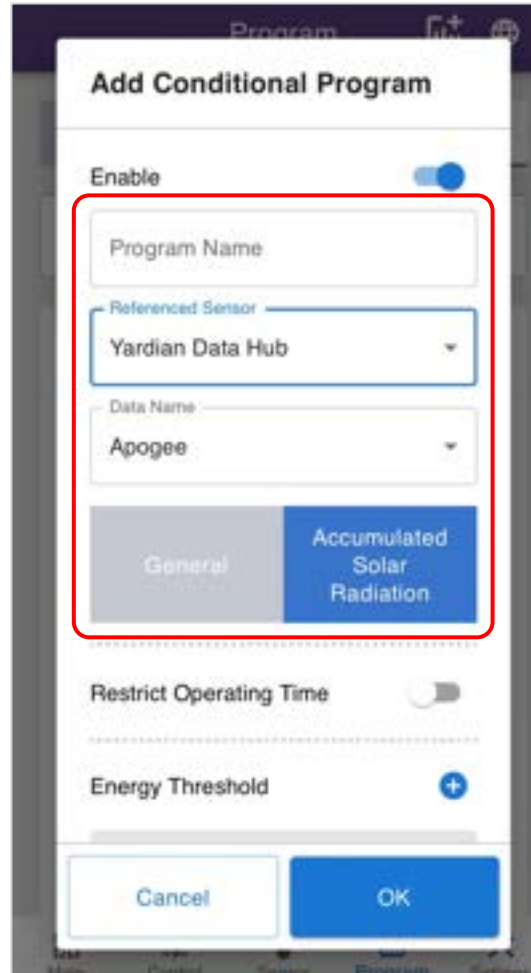
### Conditional Program/Accumulated Solar Radiation:

<b>Program Name</b>	Edit Program name
<b>Referenced Sensor</b>	Select the program data source (options are the sensors configured on the "Sensor" page)
<b>Accumulated Solar Radiation</b>	Control stations based on the "Accumulated Solar Radiation" threshold value
<b>Restrict Operating time</b>	Set the days of the week and time slots for daily operation
<b>Energy Threshold</b>	Set the accumulated threshold with multiple time periods. When the threshold is reached, it triggers, resets to zero, and triggers again when accumulated
<b>Continuously Accumulate During Execution</b>	Continue accumulating values while the station is running
<b>Daily Reset Accumulation</b>	When not enabled, the last untriggered solar radiation value of the day will accumulate to the next day
<b>Add Station</b>	Add stations to activate when the threshold value is reached

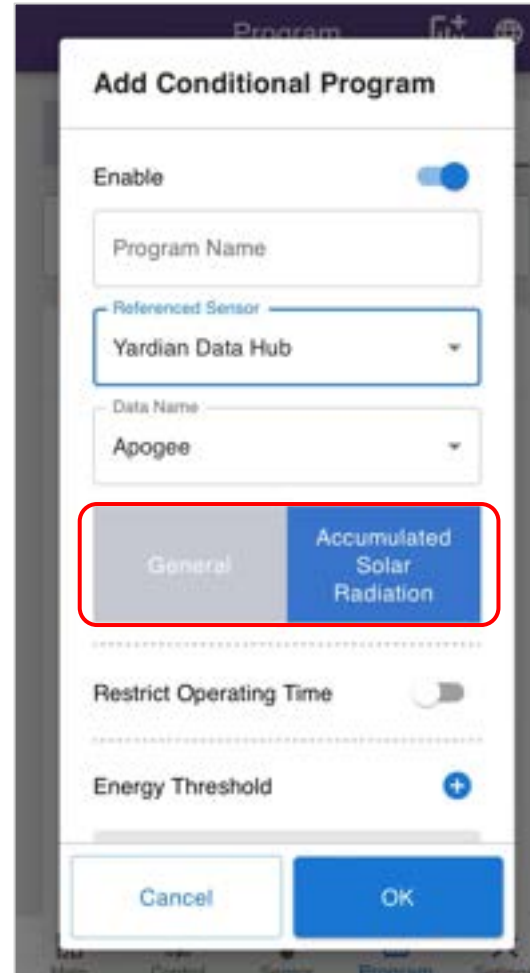
# a. Conditional Program] Accumulated Solar Radiation ( Apogee Solar Sensor)



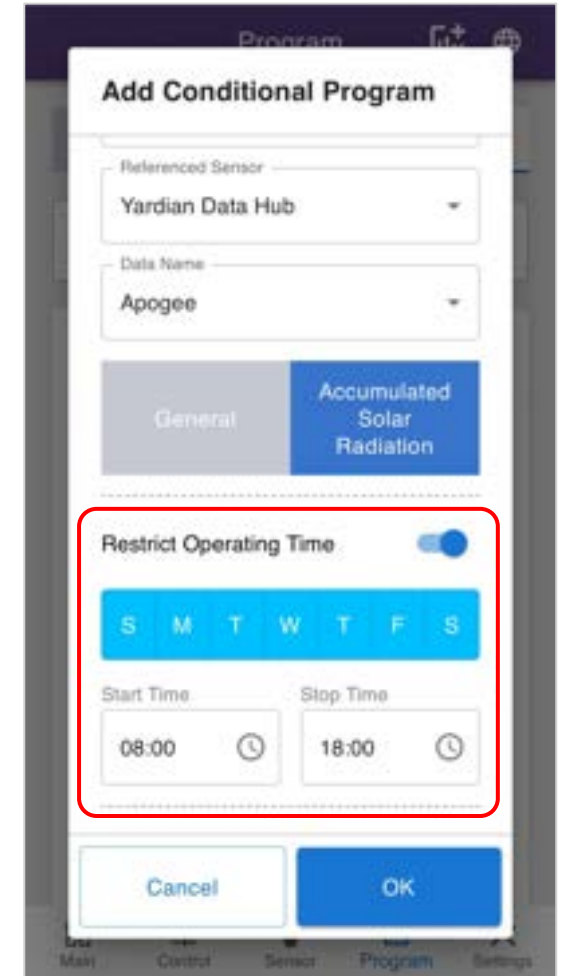
1. Add conditional Program. Tap Program -> Conditional -> Add Conditional Program



2. Enter Program Name -> Select Referenced Sensor -> Choose Accumulated Solar Radiation

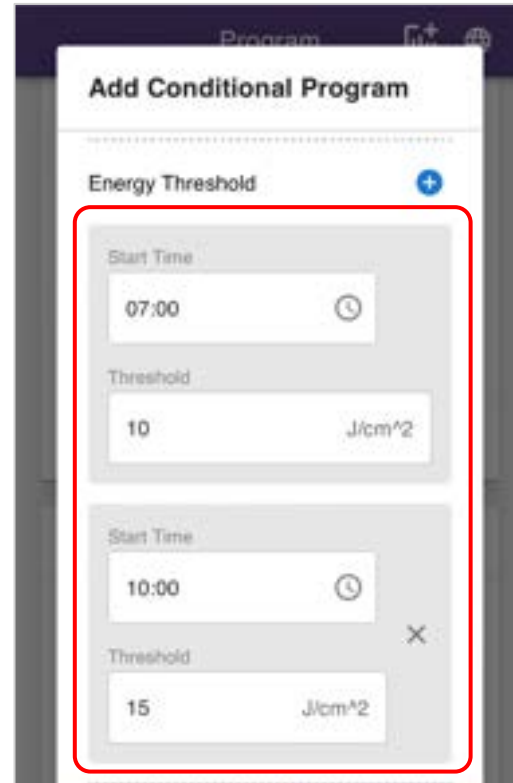
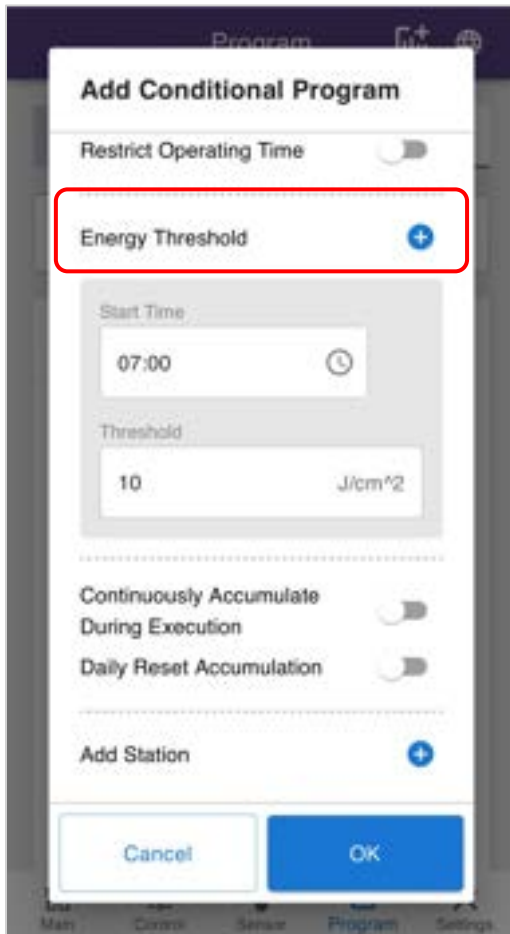


3. Enable Restrict Operating Time

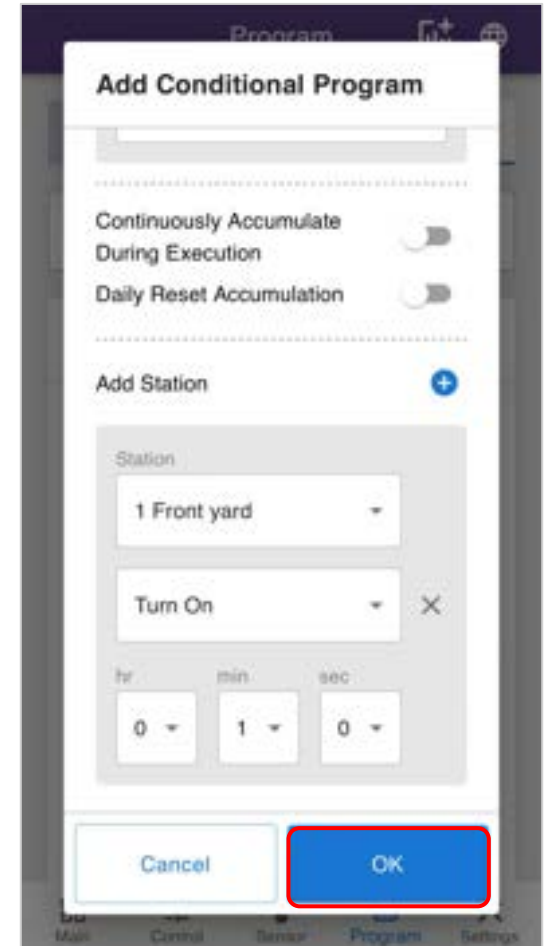
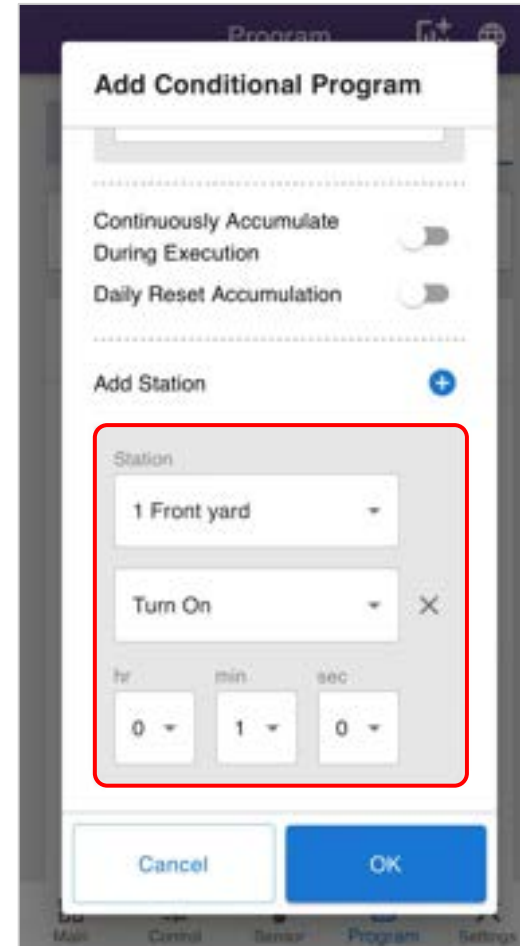


4. Set the days of the week and time slots for daily operation

## b. Conditional Program] Accumulated Solar Radiation ( Apogee Solar Sensor)



✘ In the example, if the accumulation reaches 10 J/cm<sup>2</sup> between 7:00 and 9:59, it will trigger and reset to 0, triggering again at 10 J/cm<sup>2</sup>. From 10:00 until the end time (or midnight if not set), it requires 15 J/cm<sup>2</sup> to trigger, and so on.



5. Tap **+** Set the solar accumulated threshold, set multiple time periods when necessary

6. Tap **+** add station to turn on or off, and adjust the duration

7. Tap OK to complete the set up



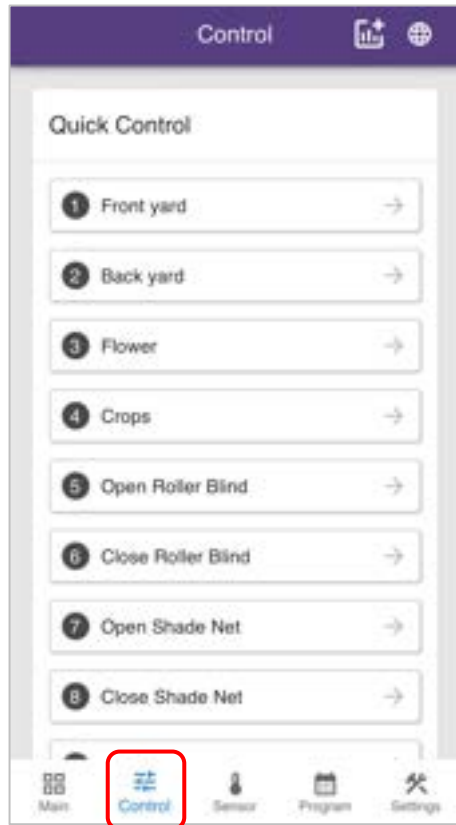
# How to Use the "Quick Control" and "Quick Program"

---

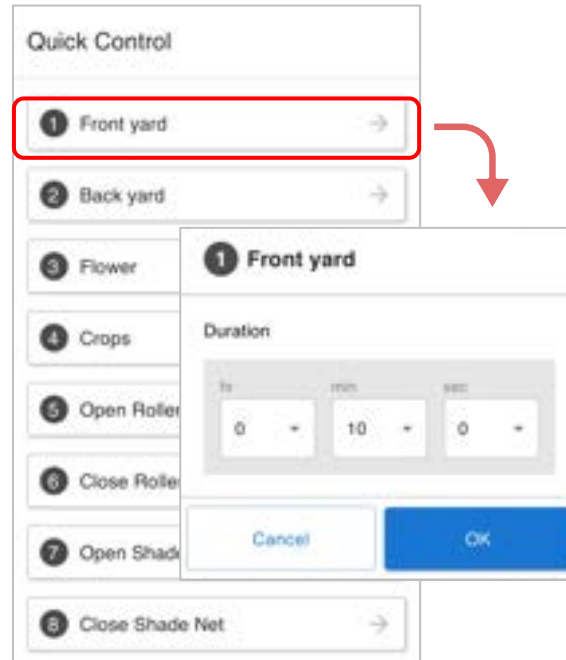
- Run the "Quick Control"
- 【Quick Program】Add Zone and Duration
- 【Quick Program】Pause and Delete



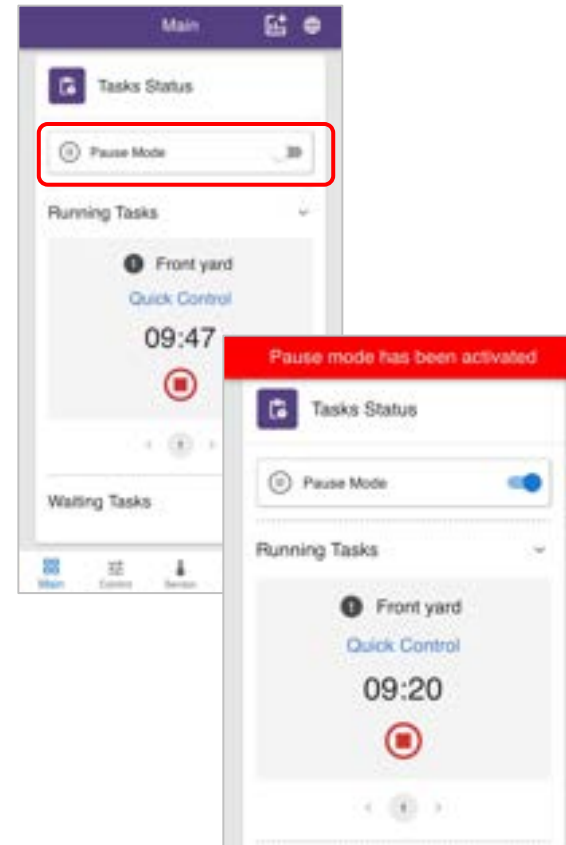
# 1. Run the Quick Control



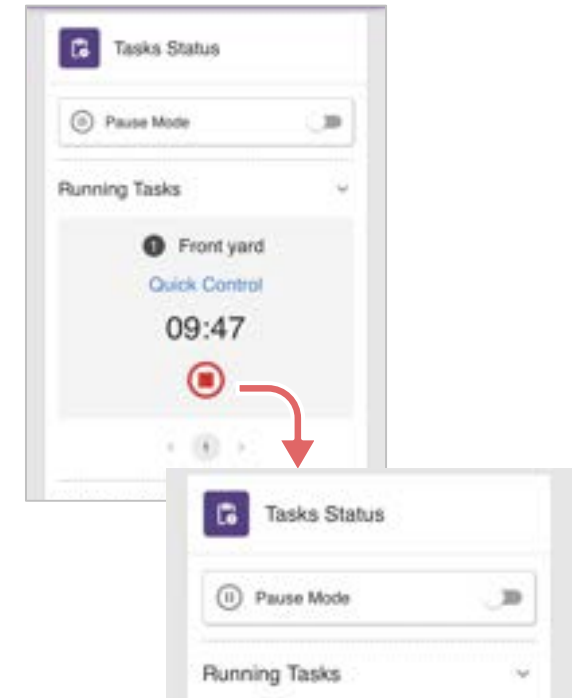
1. Select "Control" → Quick Control & Quick Program at same window




2. Set Zone 1 to run for 10 minutes → Click OK → It will return to the Main page while running.



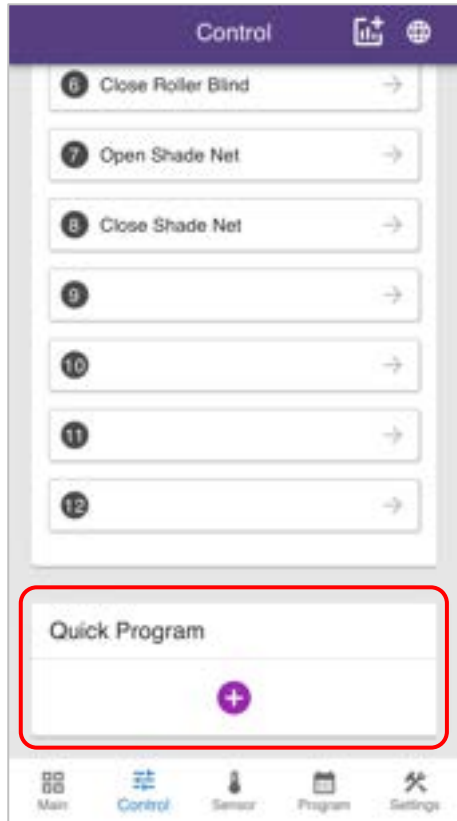
3. "Main" → Task Status  
Running Task (countdown)  
4. Pause → Pause Mode (Zone 1 paused in operation)




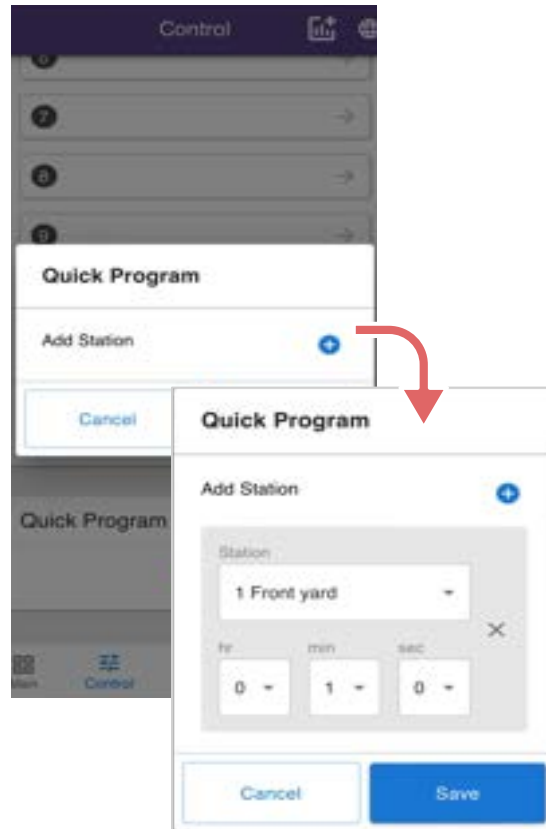
5. Cancel the Pause mode  
(Continue running task for Zone 1)


Click  to delete the running quick program

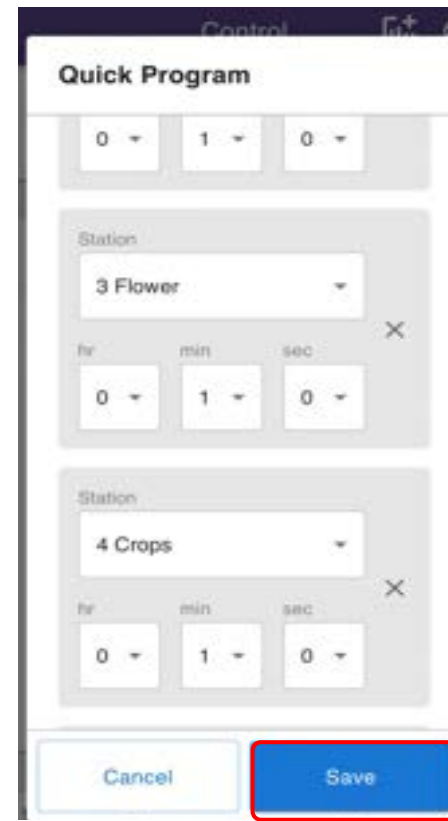
# 2-1【Quick Program】Add Zone and Duration



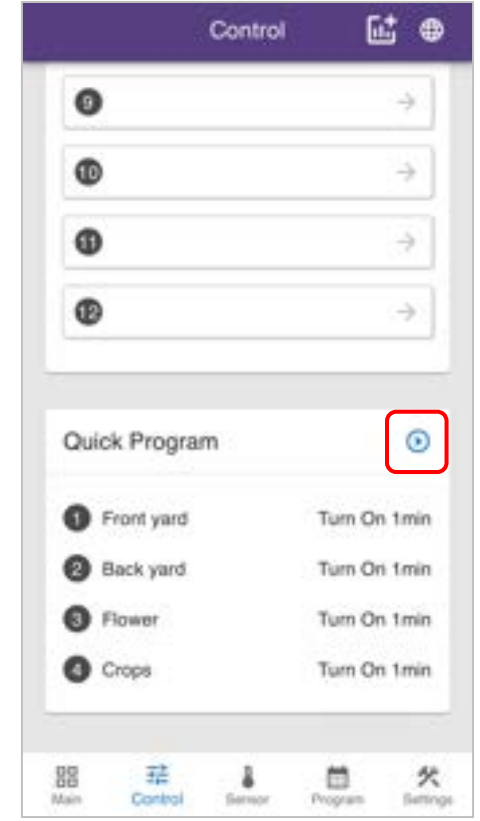
1. **Quick Program** (Click )  
→ Quick program setting window



2. **Add Zone** (Click )  
(Adjust zone execution order according to your needs)

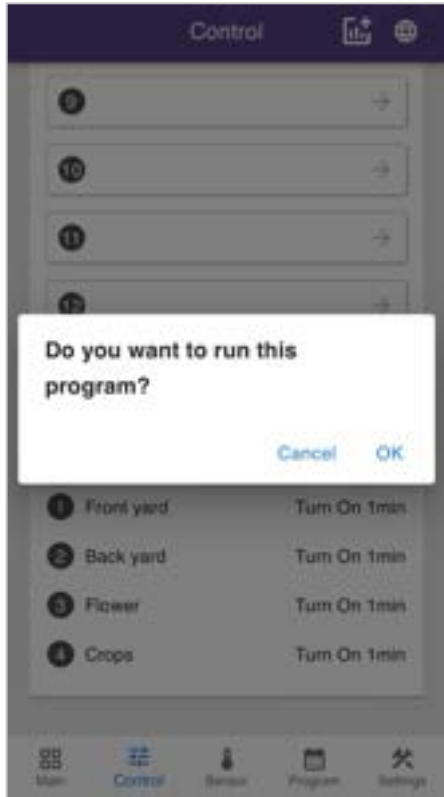


3. **Set different durations for each zone, then click "Save"**

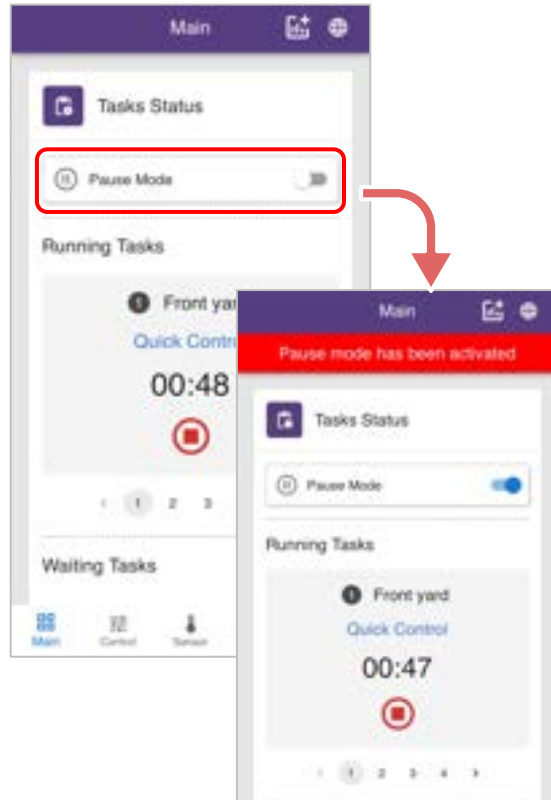


4. Click  to run the quick program

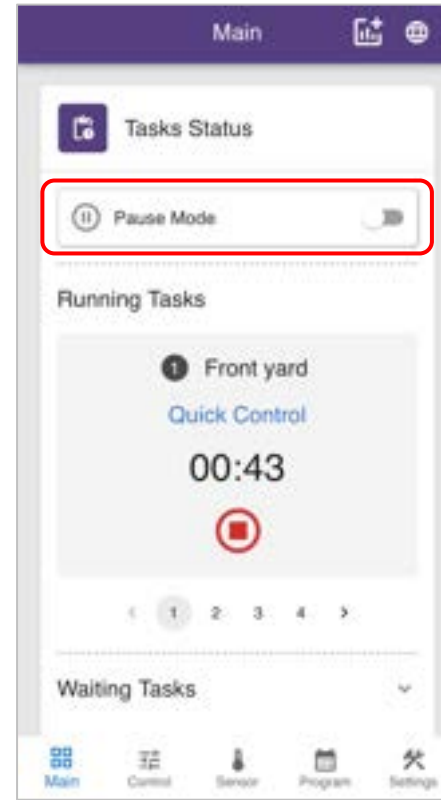
# 2-2【Quick Program】Pause and Delete



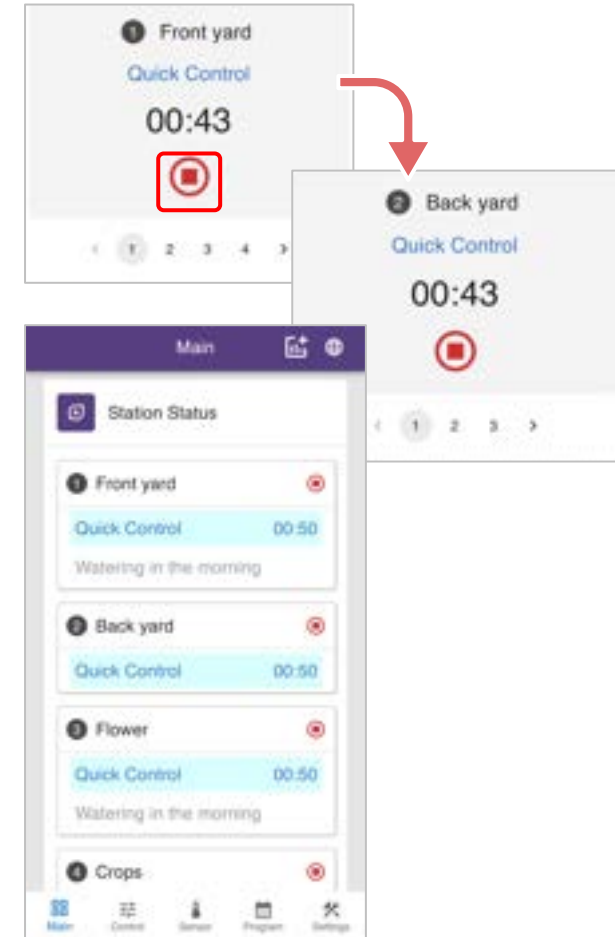
1. Click OK → It will return to the Main page while running.




2. "Main" → Task Status Running Task (countdown)  
3. Pause → Pause Mode (Zone paused in operation)



4. Cancel the Pause mode (Continue running task)



Click  to delete the running quick program





# Download sensor data

---

1. Sensor Data Download (Controller Connected to the Internet)
2. Sensor Data Download (Controller Not Connected to the Internet)

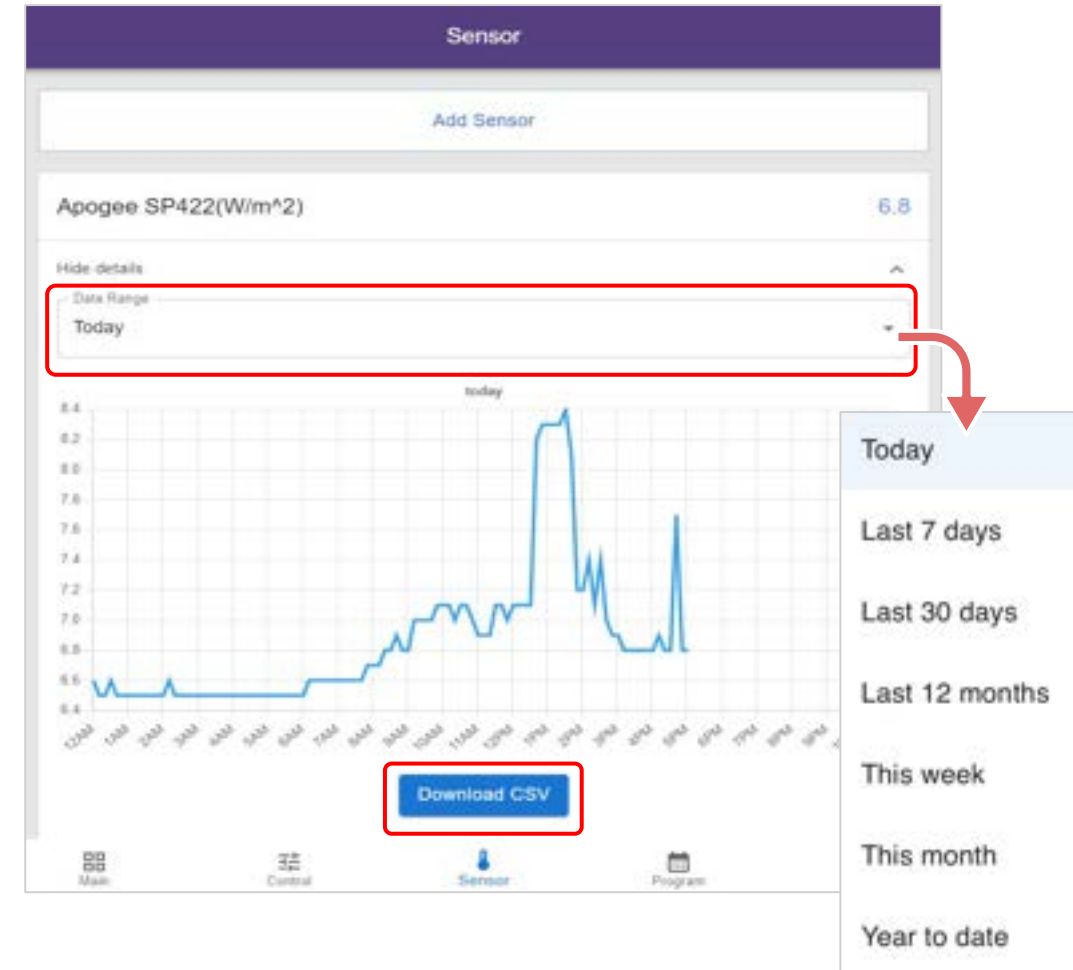
# Sensor Data Download (Controller Connected to the Internet)



1. The data stored in the sensor can be downloaded only through a computer's web browser (the computer needs to be connected to the internet).
2. Please open your computer's web browser and enter the following URL in the address bar:  
[https://remote.aeonmatrix.com/\(YID on the device\)/](https://remote.aeonmatrix.com/(YID on the device)/)
3. Navigate to the sensor page, locate the sensor whose data you want to download, and click on "Download Data" below to download the CSV file containing the recorded data for that sensor.

## Note:

1. Open Excel and import the CSV file:
2. Go to Data -> Get Data -> From Text/CSV.
3. Choose the downloaded CSV file.
4. Select "65001: Unicode (UTF-8)" as the original file format.
5. Double-click on "Delimiter" to choose "Comma" as the delimiter.



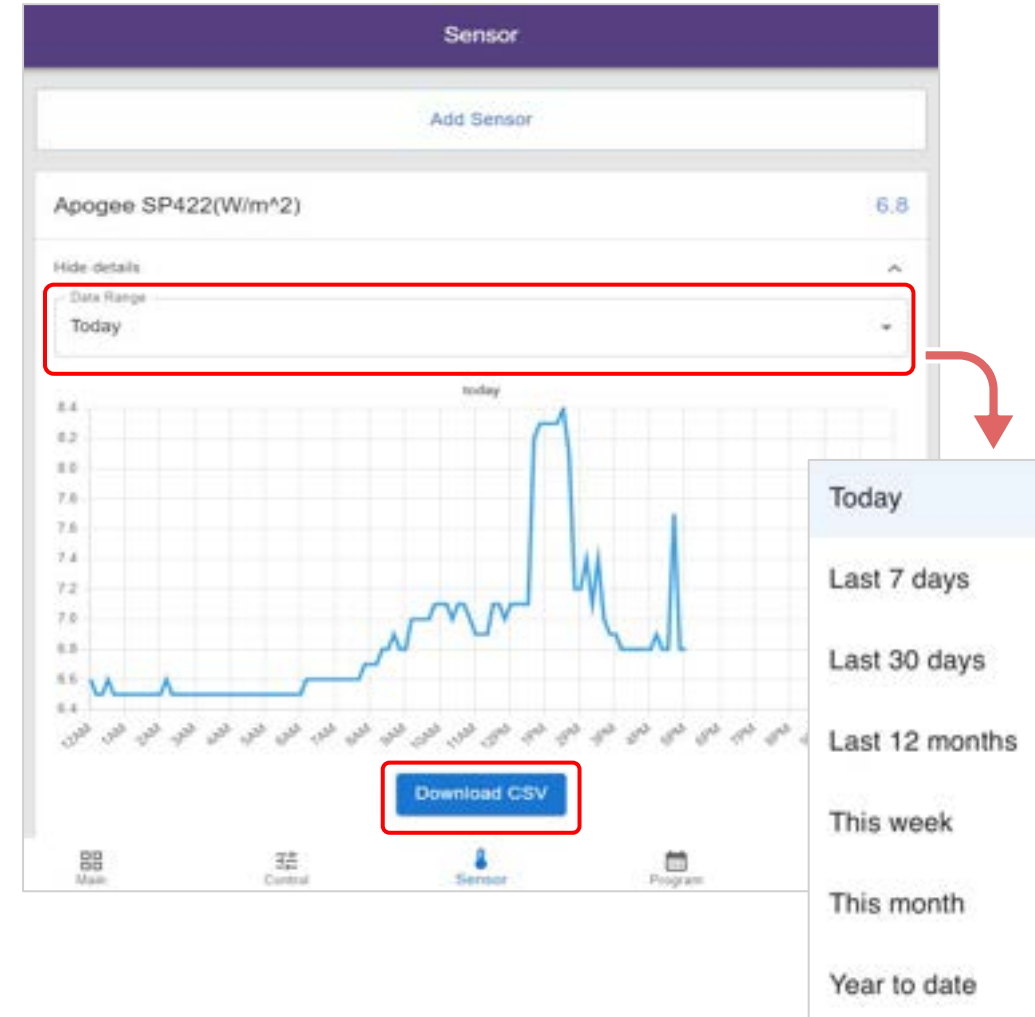
# Sensor Data Download (Controller Not Connected to the Internet)



1. Sensor data can only be downloaded via a web browser on a computer or mobile device
2. The computer, mobile device, and controller must be on the same network (using the same router)
3. Please enter 10.88.88.1 in the browser's address bar to access the control panel

## Note:

1. Open Excel and import the CSV file:
2. Go to Data -> Get Data -> From Text/CSV.
3. Choose the downloaded CSV file.
4. Select "65001: Unicode (UTF-8)" as the original file format.
5. Double-click on "Delimiter" to choose "Comma" as the delimiter.

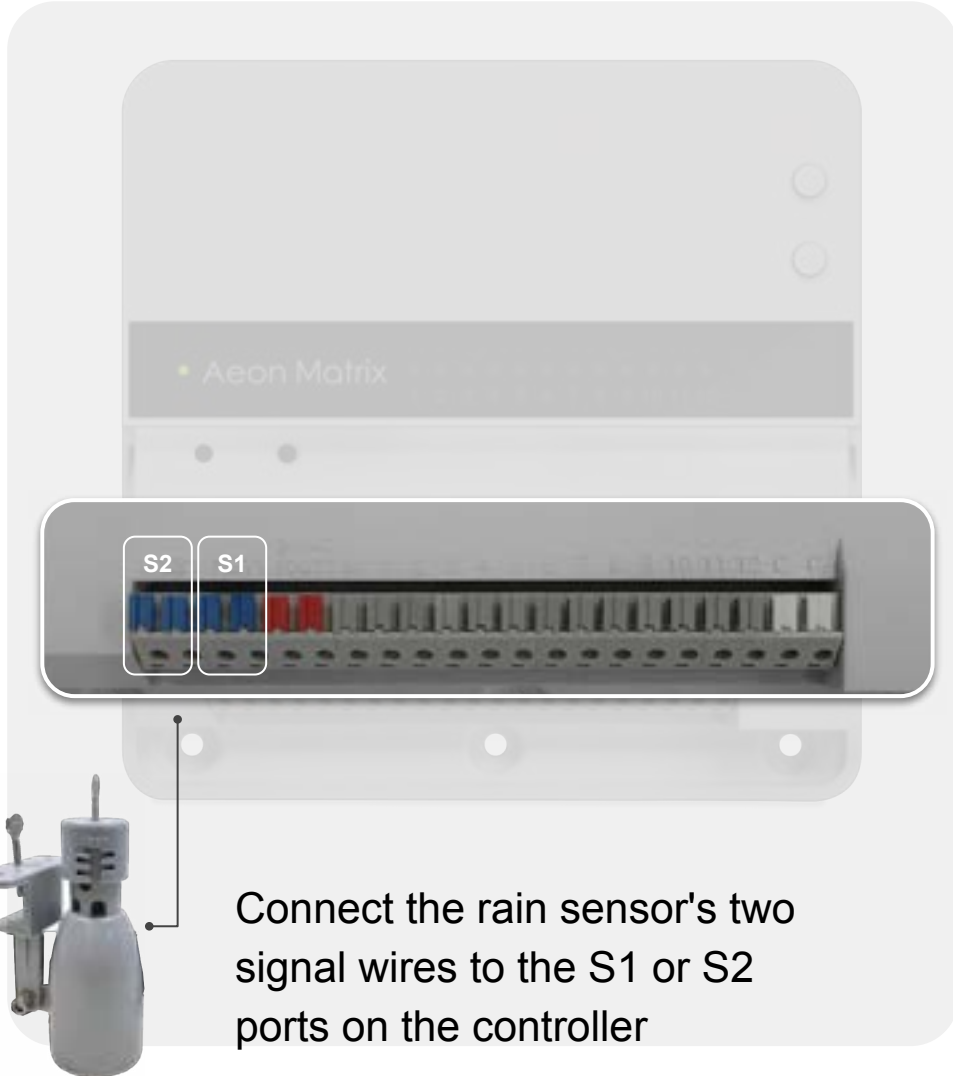




# Rain sensor installation



# Rain sensor installation



**Add Sensor**

Sensor Name

Sensor Category: Binary Sensors

Sensor Type: Normally Closed Rain Sensor

Sensor Port: S1

Enable Notification: Set as needed

Cancel OK

Main Control **Sensor** Program Settings

Sensor Category: Binary Sensors

Sensor Type: Normally Closed

Sensor Port: S1 or S2

Enable Notification: Set as needed

Sensor → Add Sensor

#If the station should activate when triggered, select "General Sensor" for the sensor type



# Firmware update





# Firmware update

If your controller has activated cloud services and is connected to the internet, you can contact the Aeon Matrix support team to check for the latest firmware. They will perform the over-the-air update for you

If your controller isn't connected to the internet, you can still contact the Aeon Matrix support team to get the latest firmware and update it manually.

## Manual Firmware Update

**Prepare USB drive** - FAT32 format is required. The size should be less than or equal to 8GB

1. Please download or get the zip file from Aeon Matrix support team
2. Unzip the downloaded zip file and save the firmware file(s) in a USB drive. DO NOT put them in any folder.

### Update firmware

1. Insert the USB drive, then press the **reboot button**.
2. Press and hold both the **select button** and **run/stop button** **immediately when the LED turns red**. Release the buttons when you see the LED turn **blue**. The LED will continue to change colors (**red** -> **blue** -> **green**) while installing the firmware.

**Please DO NOT turn off the power during this process.**

3. The system will be rebooted automatically when the update is completed. You can remove the USB drive when the **LED is not in red**.



*Thank you*

---

[www.aeonmatrix.com](http://www.aeonmatrix.com)

support@aeonmatrix.com